

CELEBRATING INNOVATION, BEST PRACTICE AND GOOD DESIGN IN SCAFFOLDING

NASC YEARBOOK 2022

NATIONAL ACCESS AND
SCAFFOLDING CONFEDERATION
NASC.ORG.UK

NASC



image: CAA House, London

Taking construction to a higher level

Call us on: 020 8305 1988

Millcroft Services Plc
Salutation House, 1 Salutation Road, Greenwich, London SE10 0AT
Email: sales@millcroft.co.uk

www.millcroft.co.uk

Millcroft

Scaffolding

CONTENTS

3

6 **President's report**

NASC President, Lynn Way, outlines the progress made with two of her core presidential objectives: ex-services recruitment and NASC digital.

8 **Meet the team**

Who's who in the NASC: officers, council, committee chairs, regional chairs, and NASC office staff. For full committee listings see p50.

10-14 **NASC News**

The latest round-up of news, plans and developments from the NASC. Plus the latest publications from the NASC.

30



18-48 **NASC Awards**

Showcasing the best entries to the 2021 NASC Awards. Categories include Project, Innovation, Apprentice of the Year, and the President's Award.

51-53 **Members area**

Useful information for members on new NASC members as well as council, committee and CISRS listings. Plus, more details on the way NASC works.

55-82 **Directory**

A comprehensive listing of full NASC members organised by head office as well as A-Z regional information. Also includes Information members.

Welcome



Robin James
MANAGING
DIRECTOR
NASC

The NASC has been setting the standard for scaffolding since its inception in 1945. It does this in part by not only being open to change but actively seeking it out.

All NASC Guidance, for example, is reviewed and updated at least every five years to ensure it remains relevant and fit-for-purpose. NASC Standing Committees also add to this library of health & safety, contractual, technical, product purchasing and asset protection information wherever a gap is identified.

During this year we passed the 100 titles milestone, an achievement we're incredibly proud of. For more information on this please turn to page 13.

The NASC also continues to embrace, adopt and celebrate new ways of working. In March, the NASC launched its new ePortal, through which subscribers can access the updated and expanded TG20:21 scaffolding compliance software.

This portal gives users the ability to log in to TG20:21 on the go, through their phones and tablets, and also allows them to read digital versions of the associated TG20:21 Design and Operational guides and find they're looking for with ease through the keyword search.

This year's NASC Safety Report has also taken a big step forward from previous editions as it is built upon the most comprehensive collection of data from NASC contractor members.

By analysing this data we have been able to identify more trends hidden in the numbers, and, crucially, put plans in place to help

address them. For more on the Safety Report turn to page 10.

The NASC as an organisation is also not above changing its approach and offer to the scaffolding and wider construction industries. For this reason, we're currently undertaking a major research project to gauge the views of a number of key audiences.

We're excited to receive the findings and look at ways to better connect and engage with businesses in our industry and beyond. Watch this space for more on this.

Lastly, the NASC celebrates NASC member innovation through its appropriately-named Innovation of the Year NASC Awards category. Entries are summarised on page 45.

I am pleased that in the face of unprecedented challenges brought on by Covid-19, Brexit and other factors, the NASC and its members continue to lead the way in the scaffolding industry.

There are many individual and collective successes and achievements to be proud of, many of which are featured in the following pages.

The Yearbook once again features our exhaustive Directory, listing all NASC members A-Z and then by type and region.

I'd like to sign off by thanking all the people who help make the NASC what it is; the staff, listed on page 8, the President, the member representatives who sit on the NASC committees, and the entire membership as a whole.

“THE NASC IS UNDERTAKING A MAJOR RESEARCH PROJECT TO GAUGE THE VIEWS OF A NUMBER OF KEY AUDIENCES. WE’RE EXCITED TO LOOK AT WAYS TO BETTER CONNECT WITH BUSINESSES.”



TRAD UK
HIRE & SALE
SCAFFOLDING &
SAFETY SYSTEMS



INNOVATION, SAFETY & EXCELLENCE

PROUD TO BE LEADING OUR INDUSTRY FOR 50 YEARS

At TRAD, we've been dedicated to championing innovation within our industry for 50 years. This is why we continually work to improve efficiency and safety, to meet and exceed our clients' ever-changing needs, while setting new standards for access equipment and safety systems.

Today, TRAD UK's sector-leading range, which also includes a variety of Altrad products, makes it easier than ever before to acquire the right solution for your requirements. Supported by our vastly experienced team, who deliver the highest levels of service through our nationwide super depots, TRAD UK should be your foremost choice for quality and industry-leading scaffolding and construction safety products.

- ALTRIX Roof System
- Catch Fan
- PLETTAC METRIX
- Lift Shaft Gate
- Fabrication
- Mini Catch Fan
- TRADLOK
- Scaffold Boards
- Scaffold Tube
- Safety Deck
- TRADGUARD
- Loading Hatch

An army of new recruits



Lynn Way
PRESIDENT, NASC

One of the things that makes me most proud to serve as NASC President is spearheading initiatives that will benefit our members and the scaffolding industry as a whole.

Two such initiatives are the NASC's Armed Forces Training Fund and the NASC's digital drive.

The NASC is now playing an active role in raising awareness of the various career opportunities available to jobseekers of all ages and backgrounds.

These efforts are backed by the Forces training fund, which has recently been expanded to cover all operative training costs, taking them through to fully qualified Part 2 scaffolders.

Through this fund we are now able to take a fully rounded proposition to military personnel, not only informing them of the

benefits of embarking on a career in our industry and presenting them with live vacancies at NASC member companies, but also further incentivising them with free and full training.

I am delighted to report that this offer is being taken up and we are seeing an increasing number of armed forces leavers make the transition from the services to scaffolding.

Of course, this is only possible thanks to NASC members, who post their vacancies on the NASC's scaffolding careers site.

They've also helped to make the NASC Kickstart Scheme Gateway such a great success. Through this scheme 500 six-month work placements have been created, of which 100+ have been filled to date.

Many NASC members have rewarded their Kickstart recruits

with full time positions at the end of their placements and we're hoping many more in the coming months will be given the opportunity to stay in scaffolding.

We know we need many more new recruits of all ages to sustain industry growth and will continue to build on these in 2022.

In terms of the NASC's digital drive, we were delighted to launch the NASC ePortal earlier this year.

For now, subscribers can access the TG20:21 software and associated guides through the online portal. Further guidance will soon be added, giving users the ability to find a vast range of content in the click of a button.

The NASC will continue to explore ways in which to use technology to improve safety and efficiencies. There's much more to come on this in the coming year.



SETTING THE STANDARD FOR SCAFFOLDING SINCE 1945

www.nasc.org.uk

Leading Provider of Access & Industrial Services

One of the UK's largest scaffolding asset bases with nationwide coverage



- ✔ Accredited safety first professional service.
- ✔ Over 85 year's industry knowledge & experience.
- ✔ One of the UK's largest scaffolding asset bases.
- ✔ National coverage with over 1000 employees.
- ✔ In-house QSHE, design & engineering teams.
- ✔ Long term hire partnering agreements.
- ✔ Over 2,000 scaffolding and related products available to purchase or hire.




Scaffolding Design & Engineering Service

The Enigma in-house scaffolding design team provide economical innovative solutions and technical expertise to solve complex access challenges and have gained an invaluable reputation for excellence by utilising the latest design and planning software to deliver safe, reliable projects.

Our Professional Services include:



 Contract Scaffolding



 Scaffold Hire & Sales



 Protective Coatings



 Insulation



 Industrial Cleaning

Tel: 0330 678 1199 | www.enigma-is.com



8

TEAM

Meet the NASC

OFFICERS AND DIRECTORS

**President**

Lynn Way
(Chris Sedgeman Scaffolding Ltd)

**Vice President**

David Brown
(IBN Scaffold Access Ltd)

**Past President**

Alan Lilley
(Commercial Scaffolding Ltd)

**NASC Managing Director**

Robin James

**NASC Director of Training & CISRS Managing Director**

David Mosley

STANDING COMMITTEE CHAIRS

**Marketing**

Steve Fellows
(Malvern Scaffolding Ltd)

**ASITO**

Mike Burr
(LTC Specialist Scaffolding Ltd)

**Audit & Membership**

Wayne Connolly
(Connolly Scaffolding Ltd)

**Health & Safety**

Alan Harris
(Pro-Fix Access Ltd)

**Technical**

James Attridge
(JFE Attridge Scaffolding Services Co Ltd)

**Hire, Sales and Manufacturing**

Sean Pike
(Layher Ltd)

**Contracts**

Matthew Cousins
(Apex Scaffolding [Exeter] Ltd)

**Current Affairs**

Sarah Klieve
(High Peak Scaffolding Ltd)

REGIONAL CHAIRS

London & South East

Mike Lloyd
(LTC Scaffolding Ltd)

South West & South Wales

David Anderson
(Allen & Foxworthy Ltd)

Midlands

Phil Heffernan
(Scaffold Erection Services Ltd)

Northern & North Wales

Darren Maratty
(Interlink Scaffolding Ltd)

Scotland & Northern Ireland

Ronnie Charters
(JR Scaffold Services Ltd)

Co-opted members

Colin Murphy
(Cape Industrial Services Ltd)

CIJC and Employment Affairs

Gray Rigge
(G&E Services [UK] Ltd)

STAFF

Finance Manager and Company Secretary

Sarah Phillips

Marketing Manager

Simon Robinson

Membership Manager

Jamie McGuire

Health & Safety

Stephen Allen-Tidy

Technical

Dennis Braithwaite

Administration and Accounts

Lisa Pickering

Finance and Administration

Josephine Paton

Administration and Secretarial

Aleksandra Jawor

Training & Recruitment Officer

Henry Annafi

CISRS Administration

Laura Weekes

CISRS Administration Assistant

Keisha Schultz

CISRS Compliance Manager

Tony Barry



FORGECO

SCAFFOLDING & CONSTRUCTION COMPONENTS

PG4:18

Purchasing guidelines for:
EN 74-1 Couplers

NASC

Non-destructive Testing & Inspection

Committed to total customer satisfaction.

Our Belief is that quality should be an integral part of all stages of the manufacturing, procurement and distribution process.

We have a 20 Year history of manufacturing in partnership with the same two companies, a claim few other UK businesses can make. All goods supplied by Forgeco Ltd carry our quality guarantee, supported by £5,000,000 UK Product Liability Insurance.

During 2019, the NASC has introduced new guidance aimed at promoting improvements in the equipment our industry purchases. Forgeco Fittings have been manufactured, marked and supplied with the certification required by PG4:18, **for over 6 Years.**

MARKING REQUIREMENTS

You need to check that each coupler is marked on the lip or body with the following information:

- Reference to EN 74-1.
- Registered trade mark, or the manufacturer's name (or both) shown as XXX opposite.
- Year of manufacture (minimum last two digits).
- Coupler class (A or B).
- Type of ongoing production inspection (I or M - I, being internal quality control, M being both internal and external quality control).



ADJUSTABLE STEEL PROPS

THE **ONLY** FULLY TESTED PROPS IN THE UK
MARKET LEADER FOR 20 YEARS

BEWARE!!
ONE OFF / INCOMPLETE TESTING
DOES NOT CONSTITUTE CONFORMANCE
LEAVING YOU LEGALLY LIABLE

SCP PROPS ARE MANUFACTURED TO BS4074:1982
AND TESTED TO BS5507-3.



PROUD AUDITED MEMBERS



SPEAK TO OUR PROFESSIONAL TEAM TODAY

0121 568 7831 | Sales@Forgeco.co.uk | www.Forgeco.co.uk

HEALTH & SAFETY

Plans made to increase scaffolding safety

The NASC has published its most comprehensive annual Safety Report – containing accident statistics, analysis and plans to further improve scaffolding industry safety standards.

The 2021 Safety Report shows NASC Contractor members – who employ more than 16,000 operatives collectively – reported just 81 incidents in 2020, the second lowest figure recorded. This means that 99.5% of NASC member-employed operatives went through the year accident and injury free. There were no operative fatalities, for the eighth consecutive year.

For the 2021 Safety Report, the NASC collected more detailed accident information than ever before from its Contractor members. This enabled the NASC to identify a number of trends, causes of accidents and injuries, and the operatives that are most susceptible – by role, age and size of employer.

Robin James, NASC managing director, said: “The 2021 Safety Report shows NASC members continue to work to the highest standards. It should be remembered that during 2020 members were faced with challenging Covid-19 related working conditions, with operatives forced to significantly change the way they worked on site.

“Members rose to this challenge, not only continuing to operate wherever possible – in line with government guidance – but also ensuring safety standards were not compromised.”

Lynn Way, NASC President, added: “Whilst we’re proud of the headlines figures contained within this year’s Safety Report, this publication is intended to be much more than just a line in the sand, an annual yardstick

to measure general safety success against previous years.

“It is also a way in which we can learn why incidents occurred with a view to developing ways to plan to reduce them – benefiting both NASC members and the wider scaffolding and construction industries.”

Safety plans

The NASC’s Health & Safety Committee is currently developing a number of resources aimed at reducing incident figures. These include the production of two new A2 site posters; SG6 Manual Handling in Scaffolding Operations and SG31 Management of Slips and Trips.

The Committee is also updating the H&S Toolbox Talk Suite – available for



free download via the Members’ Area of the NASC website – and updating guidance such as SG6 and SG20 Access and Egress from Scaffolds.

Plans are also being developed to engage with small contractor members to try to establish reasons why they may have accounted for a disproportionate percentage of the recorded incidents and what additional support measures could be created to lower this number.

To read the latest NASC Safety Report visit www.nasc.org.uk

MEMBERSHIP

Access the latest scaffolding information

Businesses can secure a wide range of benefits, including access to scaffolding expertise and discounts on NASC guidance, through gaining NASC Information membership.

NASC Information members also receive regular updates on NASC activities and outputs, such as new and planned guidance, and are able to contact the NASC’s technical and health & safety advisors directly to receive support with any scaffolding-related enquiry.

Current members include BAM Construct UK Ltd, Kier Professional Services Ltd, Wates Construction Ltd and Willmott Dixon Holdings Ltd.

Jamie McGuire, NASC membership manager, said: “Through NASC Information membership, business can gain a significant discount on

all NASC guidance titles, including TG20:21, and also keep informed of all NASC activities.

“We see membership as a starting point for a two-way conversation, enabling us to communicate directly with key construction industry decision makers but also respond quickly to any questions and requests they might have.

“We are focussing on adding more value to this category of membership. We want more service providers to join so we can provide them with important information and guidance, and should they wish they can offer our full members more incentives, which will increase the overall value of NASC membership for all.”

Visit www.nasc.org.uk and click Join.

Have you heard of **PERI UP Scaffolding**?

Pick up speed with the **PERI UP Easy** advanced guardrail that enables you to construct a typical scaffolding bay in just **two minutes**.



To find out more about **PERI UP Scaffolding** speak to an expert on: **01788 288098**

For more information, scan the QR code or visit:
peri.ltd.uk/products/scaffolding/peri-up-easy-scaffolding



www.peri.ltd.uk

COMPLIANCE

NASC launches updated TG20:21 software



Scaffolding compliance took a major step forward in March, with the launch of TG20:21.

The updated and expanded scaffolding software enables users to produce quickly and simply a wide range of standard scaffolding structures, without

the need for bespoke design. The latest version builds upon TG20:13, retaining its user-friendly look and feel, but includes a number of revisions to make the process of producing compliant scaffolding – in accordance with the European standard BS EN 12811 – even

simpler, and incorporates a wider range of scaffolding types.

Additions include exterior birdcages, tube and fitting mobile towers, tube and fitting loading bays without beams, and tied independent scaffolds with three inside boards. TG20 compliance sheets are now double-sided, with an illustration and principal compliance criteria on the front, and detailed compliance criteria listed on the reverse.

Users can access TG20:21 – including the associated and updated Operational and Design Guides – via a dedicated NASC ePortal.

Strong take up

More than 1,300 users accessed TG20:21 during its first three months of operation. Statistics provided by CADS, which developed and manages the updated and extended software on behalf of the NASC, shows 1,383 unique users registered for TG20:21 between April 12 and July 31.

Download data shows these licence holders generated 21,817 TG20:21 compliance sheets during this time – equating to nearly 200 per day. Independent scaffolds were the most popular in this period, with 13,652 downloads (63% of the total), followed by free-standing tower scaffolds (1,587) and external birdcage scaffolds (1,573) – a new addition to TG20.

TG20:21 is available on an annual subscription basis, costing £300 + VAT per login per year, which is discounted to £75 for NASC full members. Discounts are available by taking out three- or five-year subscriptions. For more information visit www.nasc.org.uk

Scaffold type	Compliance sheet downloads
Chimney stack scaffold	877
External birdcage scaffold	1,573
Free-standing tower scaffold	1,587
Independent scaffold	13,652
Internal birdcage scaffold	1,566
Lift shaft tower scaffold	396
Mobile tower scaffold	376
Putlog scaffold	61
Tied tower scaffold	1,759



AUDIT Membership criteria under review

The NASC has established a working group to examine membership criteria and is currently surveying members and main contractors as part of its research. Currently the NASC sets out a number of criteria for applications and audits contractor members on an annual basis.

"We think this works", says Wayne Connolly audit committee chair (pictured above). "Main contractors continue to specify NASC-only for their scaffolding requirements and it is generally accepted that NASC members provide safe and competent scaffolding services.

"But we have to ask: could we do better? Is the current system unnecessarily exclusive? Is there a way to modernise the process to bring more businesses into membership without compromising our integrity? Can we make NASC membership more relevant to main contractors? Can we be more engaged with the wider construction industry?"

"The answer to all the questions is yes. But determining how best to deliver improvements is a slightly trickier proposition."

Connolly is chairing the NASC Membership Criteria Working Group, which is speaking with NASC members, non-member contractors and main contractors across the UK to gain a better understanding of what they think of the NASC and where it can do better.

The NASC will use this feedback to pinpoint areas of focus. Updates will appear on the NASC website.

PUBLICATIONS

100 not out: NASC reaches guidance milestone

There are now more than 100 NASC titles available for purchase via the NASC's online shop.

Guidance notes are split into a number of categories, including Health & Safety, Technical, Contractual, Asset Protection and Product Purchasing.

This comprehensive reference library is constantly reviewed and updated to ensure titles are up-to-date and fit-for-purpose.

Robin James, NASC managing director, said: "The NASC is proud to have reached this guidance milestone. The 100+ titles now available via the NASC shop provide invaluable assistance to scaffolding contractors on a wide variety of topics.

"These titles are produced and regularly updated by NASC



members sitting on the various NASC Committees, who give their time and experience free of charge to help create guidance that can be used by everyone working in the scaffolding industry."

Much of the NASC's guidance – including all Health & Safety titles – can be down-loaded for free via the NASC website.

For a full list of NASC guidance titles visit nasc.org.uk

Latest guidance available now

TITLE	PRICE – NASC-MEMBER	PRICE – NON-MEMBER
APG1:21 Asset Protection for the Scaffolding Industry	£3.40	£7.00
CG16:21 Employment Contracts	£2.80	£6.00
CG17:21 Commercial Checklist for Scaffolding Contractors	£2.80	£6.00
CG21:21 An Employer's Guide to Right to Work Checks	£4.50	£9.40
CG23:21 Training Costs Agreements	£2.30	£4.70
PG7:21 Purchasing Guidelines for Prefabricated Structural Transom Units	£2.30	£4.70
PG8:21 Purchasing Guidelines for Ancillary Scaffolding Components	£2.80	£6.00
PG9:21 Purchasing Guidelines for Scaffold Ladders	£2.80	£6.00
SG9:21 Use, Inspection and Maintenance of Lifting Equipment and Accessories for Lifting in Scaffolding	£9.00	£18.00
SG39:21 Guidance on Appointing a Scaffolding Contractor	£3.40	£7.00
TG16:21 Anchoring to the Ground	£3.40	£7.00
TG25:21 Scaffold Tube Storage Racks	£3.40	£7.00



RECRUITMENT

NASC gives young jobseekers a kick start

The NASC is taking steps to fill the scaffolding portion of the looming skills gap that threatens to put the brakes on the construction industry's post-Covid growth.

The NASC already has a dedicated scaffolding careers website, which gives jobseekers advice on the variety of careers that are available to them, but has undertaken a number of initiatives to play a more active role in bringing more recruits into the industry. These include working alongside the Department of Work and Pensions (DWP) to create the NASC Kickstart Scheme Gateway.

At the last count, 500 six-month work experience placements at over 80 NASC member companies across

the UK had been made available to young people. More than 100 of these placements had been filled to date.

Furthermore, the first batch of Kickstart graduates – those that had successfully completed their half-year placements – have come through. Many of these graduates have secured full-time positions.

The NASC continues to offer financial incentives to its members to support the training of new scaffolding industry employees. These include a £50,000 funding pot through which NASC contractor members can claim up to £125 per operative for completing the New Entrant, CISRS Operative Training Scheme, and a £150,000 fund to re-train ex-military personnel.

The NASC has recently expanded the scope of the Armed Forces Fund, meaning NASC contractor members can now receive the full cost of taking an ex-forces starter through the CISRS Scaffolder training scheme – COTS, Part1, Part2 VQ2 and skills tests.

Members can still receive up to £1,000 towards non-operative training. This can cover the cost or partial cost of one course or several shorter duration courses and can be used in full on one individual or smaller payments on several individuals.

The NASC is continuing to work with partners on the development of Pre-Employment Training Schemes (PETS) and has had successful outcomes such as with NETA, which resulted in 80% of participants achieving employment after the six-week programme and 100% of candidates receiving their COTS cards.

After a meeting with three directors within the DWP in August, it was agreed that the NASC would be involved in strategic discussions to develop PETS in partnership with a number of job centres once the Kickstart scheme concludes its initial phase at the end of this year.

The NASC has become part of the Corbett Network for Prisoner Re-Integration, a coalition of charities, social enterprises, CICs, non-profit organisations and businesses with a social mission who work with those in prison and after release. It plans to provide a number of career opportunities to ex-offenders.

PUBLICATION

Free guide to appointing a scaffolding contractor launched



The NASC has published a new free guidance note aimed at making the process of appointing a scaffolding contractor clear as possible.

'SG39-21 Guidance on Appointing a Scaffolding Contractor' is intended to be used in conjunction with the NASC's comprehensive scaffolding

management guide, updated in December 2020. Both can be downloaded for free via the NASC website.

Under The Construction Design and Management Regulations (CDM), principal contractors and contractors have an important role in managing health and safety risks during the construction phase. Among their duties, they are required to check that anyone they appoint has the skills,

knowledge, experience and, where relevant, the organisational capability to carry out their work safely and without risk to health.

These guides have been prepared by the NASC to improve the quality of the scaffolding structures erected in accordance with current legislation, guidance and protocol and to minimise the risk of accident or injury to operatives working on or near the scaffold and the general public.

A large, circular industrial structure, possibly a storage tank or silo, is shown under construction. It is completely encased in a complex network of white metal scaffolding. The structure is set in a snowy, open landscape with some trees in the background. The overall scene is dimly lit, suggesting an overcast day.

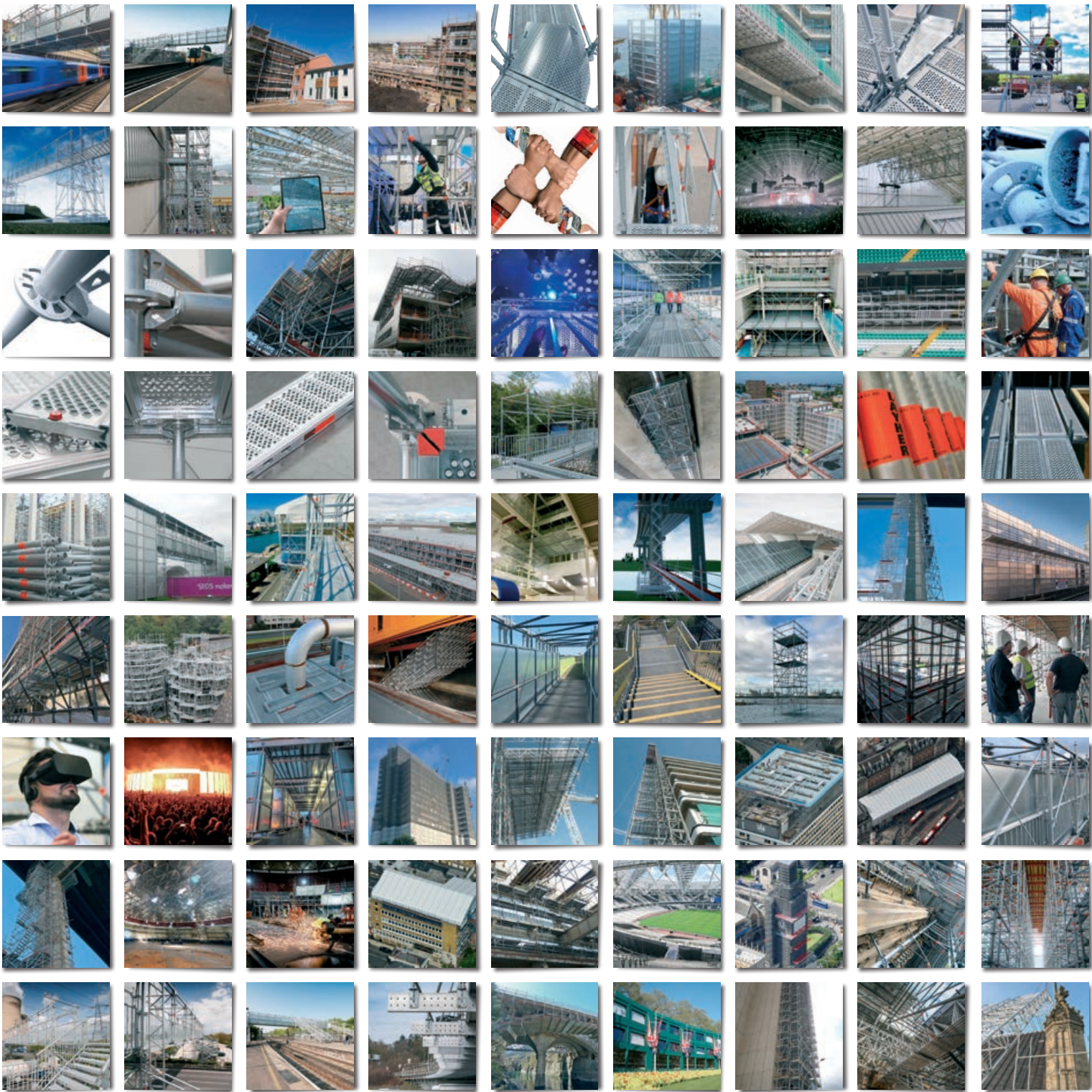
MINDS COMBINED TO SOLVE ACCESS CHALLENGES

HAKI is the leading specialist in modular access solutions for complex and temporary works.

As part of our culture, we view partnerships as a backbone to our operations, and an integral part of our future success.

Today, we are proud to be working collaboratively with a growing network of partners across the UK to solve supply, access and efficiency challenges.

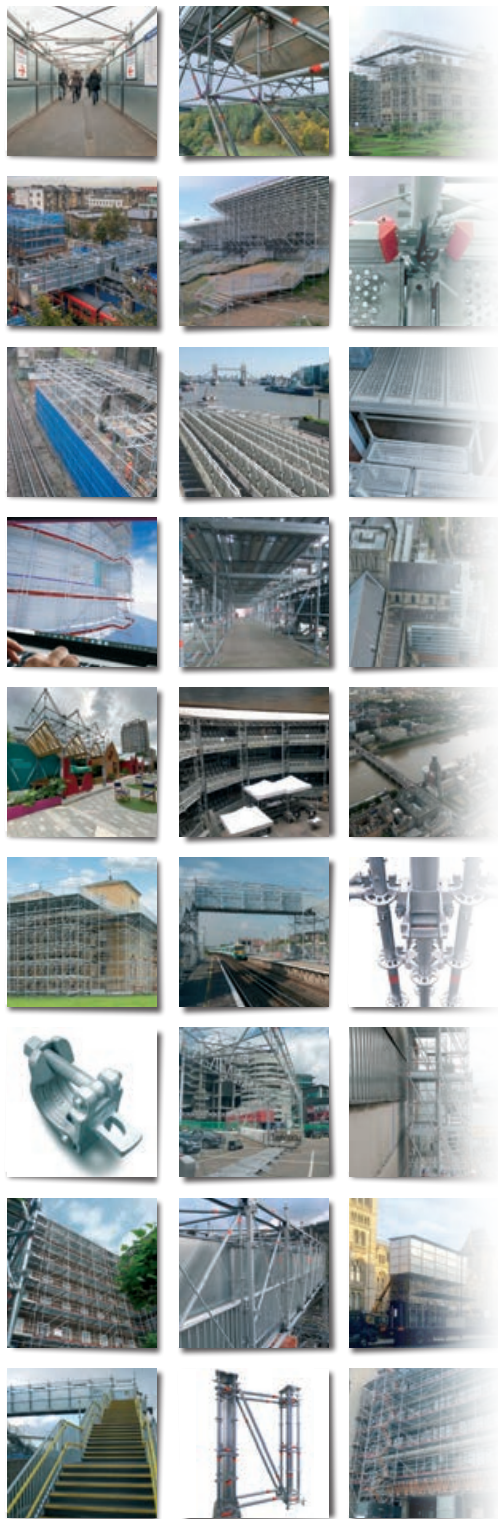
Find out how we could work together at:
haki.com/partnerships



The *past*, present
and *future* of
system scaffolding

Layher UK info@layher.co.uk | www.layher.co.uk





For more than
75 years,
Layher has focused
on **innovation**
not imitation.

It's why we remain
the past, present
and future of
system scaffolding.

Layher® 

More Possibilities. The Scaffolding System.



CREAM OF THE CROP

OVER THE NEXT 30 PAGES WE SHOWCASE
THE NASC MEMBER PROJECTS AND
PEOPLE SHORTLISTED FOR AN NASC AWARD





SEVERN TRENT WATER, TRIMPLEY

NASC Member: Altrad Services UK

Main contractor: Severn Trent Water (STW)

Altrad Services UK was contracted by STW to erect an access and roof support scaffold around a concrete/

brick contact tank used to store clean drinking water. The temporary roof was required to provide a watertight structure whilst repairs are carried out to the tank.

Altrad constructed a 55m long x 44m wide four-sided buttressed independent free-standing scaffold using Altrad Plettac Contur system scaffolding.

The project presented various challenges in terms of access required to the structure, sloping grass foundations and various obstructions along both elevations.

They used a rolling roof method of installation to overcome the access issue but also because this allowed them to erect the entire scaffolding and roof from behind collective fall protection, with no requirement to crab along the beams at any point, thereby reducing work at height man hours and risk.

The free-standing nature of the project, the long-term duration (18 months) and the exposed site location meant that the uplift from the roof and the overturning moment on the supporting scaffolding was very high. This led Altrad to model the full scaffolding

THE PROJECT PRESENTED VARIOUS CHALLENGES...THE FREE-STANDING NATURE, THE LONG TERM DURATION AND THE EXPOSED SITE. THIS LED ALTRAD TO MODEL THE STRUCTURE TO CONDUCT A FULL 3D ANALYSIS AT THE EARLY STAGES OF THE PROJECT



FORTH RAIL BRIDGE, FIRTH OF FORTH

NASC member: Denholm Industrial Services Ltd

Main contractor: Balfour Beatty / Network Rail

In Spring 2019, Denholm Industrial Services Ltd was approached by Balfour Beatty to provide access solutions to allow the five spans of the Northern approach viaducts of the Forth Rail Bridge to be repainted.

Denholm erected suspended access slung from the bridge steelwork with access via scaffold staircases and goods and personnel hoists. Each scaffold span was a 50m long x 10m wide x 10m high suspended birdcage with shrink-wrap encapsulation to the outer faces.

The scaffold was required to allow the Denholm Industrial Services painting team access to all the steelwork sections on the bridge spans and to collect and contain all arisings from these re-preservation works.



The design was created using a combination of historic drawings from the 1800's and site surveys to determine the geometry of the structure. The logistics of keeping the areas below the works safe meant adopting safe methods of work to tether tools and scaffold equipment and erecting safety netting in critical areas.

structure to conduct a full 3D analysis at the early stages of the project. They were then able to provide the main contractor with very accurate leg (standard) loads up front, enabling them to install suitable foundations under all standard locations before the work started.

**Severn Water
project by Altrad**

**Denholm Industrial
Services's
scaffolding on The
Forth Rail Bridge**





THE TECHNICALLY COMPLEX SCAFFOLDING WORKS WERE DESIGNED IN HOUSE BY FOUR DESIGN ENGINEERS: ONE BASED IN THE UK, ONE IN AUSTRALIA AND TWO IN HOLLAND. THE TEMPORARY ROOF WAS DESIGNED IN 3D

TOWN HALL, MANCHESTER

NASC member: Brand Energy & Infrastructure Services UK Ltd T/A Lyndon SGB

Main contractor: Lendlease

Lyndon SGB was chosen as the external scaffolding contractor for the £300m renovation of the Grade I listed Manchester Town Hall by principal contractor Lendlease – one of the largest construction sites in Europe and currently the UK's biggest single scaffolding contract.

The Lyndon SGB scaffolding is in situ to give access to all elevations on the major renovation project, allowing Lendlease contractors to access no less than 34 chimneys, the three main towers and all areas of the structure which require renovation works.

Vast temporary roofs covering all existing the roofs are being provided – which will make up more than 10,000m² of weather protection. And there are hundreds of access platforms totalling 22,000m² and multiple combined scaffold staircases totalling 450m in height – enough to reach the top of the Empire State building.

The technically complex scaffolding works were designed in-house in the Lyndon SGB/BrandSafway group by four design engineers: one based in the UK, one in Australia and two in Holland. The temporary roof and the intricate more technically involved sections were designed in 3D.

The scaffolding erection is being carried out by more than 50 skilled Lyndon SGB scaffolders, working on more than 200 scaffold structures – independents, birdcages, beam sections, staircases, chimney scaffolds, and temporary roofing – with a total weight of approximately 3,700 tonnes.

The Town Hall in Manchester has more than 200 scaffold structures



SMITHFIELD MEAT MARKET LONDON

NASC member: JDC Scaffolding Ltd
Main contractor: PAYE Stonework

JDC Scaffolding has been involved with this project since 2017. The works involve remedial works to the historic Smithfield Meat Market, which was nearing collapse. The works have involved shoring, protection and general access in the building which will become the new Museum of London when it moves from Barbican.

This phase of works is extremely design intensive and is based on the very specific “Constraints Document” produced by AKT 2. The design to date comprises a suite of 26 drawings for Phase 2 and 16 drawings for Phase 2A.

The designed scaffolding works comprise of a construction deck to the whole footprint including large clear span areas, access to the existing roof dome, temporary roof coverage to the whole footprint – six separate temporary roofs, full height and full-length access to the existing roof lanterns, temporary bracing to the existing trusses, lateral restraint to the existing steel frame whilst it is decoupled from the external walls during the demolition/new construction process.

Smithfield Meat Market under scaffolding

ONE STATION SQUARE, LONDON

NASC member: Connect Scaffolding Ltd
Main contractor: Kier Construction

Connect Scaffolding Ltd supported Kier Construction with scaffolding solutions during the construction of a 22-storey residential building on a site in Tottenham Hale.

One, Station Square abuts a hotel

Connect used the Layher Allround system to provide access to the full perimeter of the new RC frame building. The scaffolding was erected to a total height of 37m, fully boarded 2m lifts, mini catch fans were installed and raised progressively around the perimeter as works developed.

The scaffolding had many beamed areas around entrances and roofs. One of the roof areas was constructed using bespoke RMD gallows brackets with a step-by-step Risk Assessment Method Statement (RAMS) installation guide designed by Connect’s Temporary Works Design Team.

Due to the shortage of space around site all of the loading bays were cantilevered.

The scaffold layout and tie patterns had to be carefully designed and executed on site to ensure leg loads were not exceeded. This involved collaboration with Kier and the brickwork contractor at an early stage to agree on setting out and tie locations to ensure all work could be carried out with minimum impact.





Space House in Holborn

SPACE HOUSE, LONDON

NASC member: Millcroft Services PLC

Main contractor: Erith

Space House is a Grade II listed office development located at One Kemble Street and 43-59 Kingsway in London's Holborn. The development comprises two buildings, both constructed of pre-cast concrete; one in the form of a conventional office block, and the other a circular tower. The buildings are an iconic example of the 1960s commercial property boom and 20th century architecture, and they are now being refurbished by Seaforth Land.

Working for Erith, the demolition contractor, Millcroft is currently delivering an enabling package of access and safety scaffolding to facilitate strip out and demolition. This includes removal of all windows, which will be replaced during the construction phase.

The challenging project has involved designing a scaffold for the full height of each building that does not tie into the facade. For the circular tower, this required the design and installation of a splayed scaffold that not only follows the shape of the building and provides

safe access, but also looks neat for the prestigious development in this prominent location.

The project has involved close collaboration between the skilled Millcroft team and the client. It has required a proactive approach to understanding the specific design and structural parameters involved in order to deliver a neat solution that could be achieved within the required timeframe, budget and aesthetic demands of the project.

This project highlights Millcroft's multi-disciplinary expertise, the design engineering capabilities within the business and the exceptional skill of their on-site teams. It also articulates their focus on health and safety and commitment to respecting the fabric of the built asset when designing and erecting a scaffold.



PORTSOKE STREET, LONDON

NASC member: MR Scaffolding Services Ltd

Main contractor: Oktra

One Portsoken Street, measuring over 230,000 sq ft, is the largest design and build (D&B) project in the UK. Oktra is upgrading the building's infrastructure to provide both BREEAM and BCO design standards, and has managed to add 30,000 sq ft of floor space by re-optimising the interior.

In October 2019, MR Scaffolding Services was asked to design and provide demolition access scaffolding to a giant glass atrium extending to 47m meters high.

MR was subsequently asked to provide a full public protection gantry, 3,000kg lifting frame and bridged access scaffold to the entire extent of the structure to enable glass install and facade renovation.

At the peak of the project, close to 30 MR operatives were working on site at the same time, erecting different elevations. The sheer size of the scaffolding erected – totalling 203 tons – is impressive to behold and further complemented by the complex tie configuration and bracing arrangement designed and installed to provide global stability.

Operatives adhered to company policy of six-point PPE and tethered tools at all times. Considering the scale and complexity of the project, MR was proud to report no near misses or safety incidents.

Over 200 tons of scaffold were erected on Portsoken Street project



SAFE ACCESS SOLUTIONS SINCE 1988



**Scaffold Contractors
Ancillary Licenced Scaffolding**

01793 480347 office@abbeysccaffold.com www.abbeysccaffold.com



Images © Simon at Aerial-Cam



Access was needed for Coity Castle conservation work

COITY CASTLE, BRIDGEND

NASC Member: Enigma Industrial Services Ltd

Main Contractor: John Weaver (Contractors) Ltd

Coity Castle is a major Cadw conservation project to help protect and preserve the 12th century historic building. Enigma was tasked with providing scaffolding for access solutions.

Appointed contractor John Weaver is completing the conservation project on behalf of Cadw, the Welsh Government’s historic environment service, whose primary focus is to provide an accessible and well-protected historic environment for Wales. This significant project incorporates many types of conservation work, including structural pinning, repointing and some rebuilding of sections of masonry, consolidating wall tops, and inserting missing lintels.

To protect the historic site, all conservation project work is meticulously planned with CAD drawings and 3D photogrammetry to create preliminary plans for the external scaffold. This ensures

the sloping ground within the moat can safely support the load without exceeding or damaging the critical structural integrity. Enigma’s delivered solution requires minimal foundation excavations to reduce the risk of compromising any below-ground archaeology.

The Enigma in-house design and engineering team provided a bespoke scaffold solution using buttresses and bridging scaffold beams across the moat. To prevent the monument stonework from becoming damaged, a screw tie system with internal hooks was fixed into mortar joints. Additionally, plan girders have been installed to further limit the number of physical ties into the historic structure.



MARBLE ARCH MOUND, LONDON

NASC member: PHD Modular Access Services Ltd

Main contractor: Westminster City Council and FM Conway

Marble Arch Hill is a temporary installation commissioned by Westminster City Council as part of the Oxford Street District programme, adding a new attraction to the area from Summer 2021.

The 25m tall mound is based on a scaffolding structure erected by PHD in just 21 days. The structure was required to withstand significant loading in the form of foliage, in addition to the public access.

The total weight of the structure is in excess of 130 tonnes and to counter this PHD utilised Layher system scaffolding to distribute the load to ground level. There are 498 legs (including the doubled legs and the internal infills), made out of 2,144 standards, and more than 25,000 scaffolding components in place in total.

As part of the attraction PHD also erected an internal events space formed from Layher FW System beams spanning approximately 10m and accompanied with Layher Protect panelling.

The structure utilises public access stairs to a loading of 5KN/m² and is fully compliant with building regulations. To enhance public safety PHD fabricated bespoke handrails to prevent falls but still maintains views of the surrounding area.

The Marble Arch Mound



TRAD UK
HIRE & SALE
SCAFFOLDING &
SAFETY SYSTEMS



INNOVATION, SAFETY & EXCELLENCE

PROUD TO BE LEADING OUR INDUSTRY FOR 50 YEARS

At TRAD, we've been dedicated to championing innovation within our industry for 50 years. This is why we continually work to improve efficiency and safety, to meet and exceed our clients' ever-changing needs, while setting new standards for access equipment and safety systems.

Today, TRAD UK's sector-leading range, which also includes a variety of Altrad products, makes it easier than ever before to acquire the right solution for your requirements. Supported by our vastly experienced team, who deliver the highest levels of service through our nationwide super depots, TRAD UK should be your foremost choice for quality and industry-leading scaffolding and construction safety products.



WELLINGTON MONUMENT

NASC member: Apex Scaffolding (Exeter) Ltd

Main contractor: National Trust SW/ Sally Strachey Historic Conservation

Apex Scaffolding (Exeter) Ltd was given responsibility for providing access to Wellington Monument to allow repairs and refurbishment works to be undertaken.

This was no easy task as the Grade 2 listed Monument is the tallest three-sided obelisk in the world, and three sided structures throw up the problem of how to join a continuous working platform to all faces.

Apex managing director Glenn Haines, while pondering the issue, laid three pencils on top of one another and came across the solution.

By erecting the third side with a slight drop, within the permissible dimensions of TG20:13, it meant that traditional 90° returns were not required, saving time and materials. Coupled with structural transoms, the design meant there was no need for ledger bracing, easing the passage of the larger stones across the working lifts.

The scaffold was erected in just over eight weeks. A team of seven handled eight miles of tube, 23,000 fittings and 30t of water for kentledge.

Wellington Monument: the tallest three-sided obelisk in the world

“THE GRADE 2 LISTED MONUMENT IS THE TALLEST THREE-SIDED OBELISK IN THE WORLD, AND THREE SIDED STRUCTURES THROW UP THE PROBLEM OF HOW TO JOIN A CONTINUOUS WORKING PLATFORM TO ALL FACES”



HOULDSWORTH MILL, STOCKPORT

NASC Member: Abbi Access Services Ltd

Main contractor: Wates Construction

Abbi Access Services Ltd was contracted by Wates Construction to erect a temporary roof at Houldsworth Mill to allow Wates Construction to repair and replace the historic landmark's roof membrane.

As well as working in a live environment, with tenants of the converted mill living on site at all times, the size of the roof – measuring 60m x 40m – was the main challenge to overcome. Abbi Access covered this span using three Ubix Temporary Roof Systems supported from 12 fully-boarded independent access scaffolds.

With approximately 50 per cent of this scaffolding not being able to be grounded due to a series of low level outbuildings and roofs, Abbi supported the structure with numerous suitably braced support beam configurations.



MUNICIPAL BUILDING, LIVERPOOL

NASC member: Connolly Scaffolding Ltd

Main contractor: Russell WBHO

Connolly Scaffolding Ltd provided a fully designed bespoke access package, starting with every elevation being wrapped in double width (due to architectural features) tube and fitting scaffolding, including the 200ft clock tower. All elevations had to be fully sheeted in, to contain the cleaning and repair works that were being undertaken.

A mixture of traditional tube and fitting and system scaffolds was incorporated into the design that best suited the area of refurbishment, which further made this project a unique one.

The project, being a listed heritage project, required an extreme amount of flexibility and many adaptations. Due to the ever-changing landscape that refurbishments can produce, Connolly had to adhere to a multi-disciplined programme to interface all trades from stone masons, cleaners, painters, roofers to finishing trades whilst having the ability and skill to complete

ad-hoc, unexpected, complex works, producing designs and temporary works sign off before work could begin.

It was further complicated by logistical issues, with the building located in the heart of the city, and a tight client-led programme of works.

Heritage and location issues at Liverpool's Municipal Building

Houldsworth Mill and its huge roof





SALTBURN RAILWAY VIADUCT

NASC member: Crossway Scaffolding (Elland) Ltd

Main contractor: AmcoGiffen

Crossway Scaffolding (Elland) Ltd was brought in to provide access to enable brickwork to be repaired on the Saltburn Railway Viaduct, a Grade 2 Listed rail bridge constructed between 1865 and 1872.

During the build process, the client decided to have the whole structure, 250m long and 40m high, built at once rather than a section then moved.

This required that 800 tonnes of equipment were used in this scaffolding package, including 2,265 metres or 1.40 miles of 1.28m deep beams to be in situ at the same time.

The mammoth project was further complicated by poor groundworks beneath the arches and the need for considerable trials to be undertaken to determine the best method of fixing to the brickwork, bearing in mind it is 150 years old. Crossway redesigned the fixings by incorporating steel reinforcement bars, which were

held into place with a special quick curing resin. The ties then had to be tested using a special pull tester to determine the quality of the fixings. Some had to be re-sited and retested due to sub-standard brickwork.

Saltburn railway viaduct





SAVES YOU TIME AND MONEY
FREES, PROTECTS AND LUBRICATES
NON ACIDIC, OZONE FRIENDLY
AND SAFER IN USE

DO IT WITH EASE,
WITH SCAFFEZE



10%
DISCOUNT

QUOTE SCAF10
ON YOUR NEXT
ORDER



Professional Solutions Done Right

ZEP UK Ltd.

Tanhouse Lane, Widnes, Cheshire, WA8 0RR
Tel: 0151 422 1000 - info@zep.co.uk - www.zep.co.uk





BRADFIELD COLLEGE, PANGBOURNE

NASC member: H&H Contract Scaffolding Ltd

Main contractor: Beard

H&H Contract Scaffolding Ltd was tasked with erecting a temporary roof to cover Bloods Corridor at the Grade 2 Listed Bradfield College to enable extensive roof refurbishments to take place.

H&H installed an asymmetric polygonal temporary solution as this would fit over the building's tall, ornate chimney stacks, optimise the working area beneath, minimise the amount of scaffolding required and significantly reduce the weight of the roof.

The project was complicated through restricted access area that prevented using a crane. As such,

H & H used a roof roll-out method which enabled the roof to be built from a safe working platform, using full collective fall prevention methods, and then rolled into position.

At the end of the project it also made dismantling the roof much easier while also minimising the risk of inadvertently damaging the newly refurbished roof.

Andy Thomas, managing director, said: "This was yet another example of where involving H&H from the earliest stages of a project helped to deliver benefits all round. Collaborating with the design team helped us to refine the scaffolding design to optimise its performance, while minimising the number of components, thus achieving significant cost savings on the project."



Bradfield College with asymmetric solution to its tall chimney stacks

TONE[®]

SCAFFOLDING
SERVICES

ALWAYS THINKING ||| ALWAYS SAFE



innovative
engineering
intelligent
design

Call now: **020 3781 7771**

TONE Scaffolding Services HQ Green Lane Sawmills, Green Lane, Outwood, Redhill, Surrey RH1 5QP

Email: solutions@tonescaffolding.co.uk www.tonescaffolding.co.uk





NORTHCOTE HOUSE, ASCOT

NASC member: LTC Scaffolding Ltd
Main contractor: Zenith Construction

LTC Scaffolding Ltd was approached in June 2020 to provide scaffolding that fully encapsulated the neo-Georgian building’s facades and roof while extensive refurbishment works are undertaken.

As a Grade 2 listed building, it was identified at a very early stage that no traditional scaffolding ties could be anchored into the façade of the building. Therefore, the scaffolding had to be totally freestanding and able to withstand the imposed loads from the inevitable inclement British

Northcote House (top and below)



weather and also the additional loads through the installation of the large temporary roof.

To avoid working at height, LTC erected a large Gable end scaffolding which enabled us to use an aluminium systemised roof system that could be erected from the gable end scaffolding and progressively rolled out on a

track fixed to the scaffolding running the length of both sides of the building. This ensured that the scaffolders were never working on a leading exposed edge as they were always working within the safe zone of the gable end scaffolding.

Tesra House (below)



TEESRA HOUSE, PLYMOUTH

NASC member: LTC Specialist Scaffolding Ltd
Main contractor: Henry W Pollard & Sons

LTC Specialist Scaffolding Ltd provided the internal and external scaffolding with associated services to the latest phase of the £120m redevelopment of one of the oldest

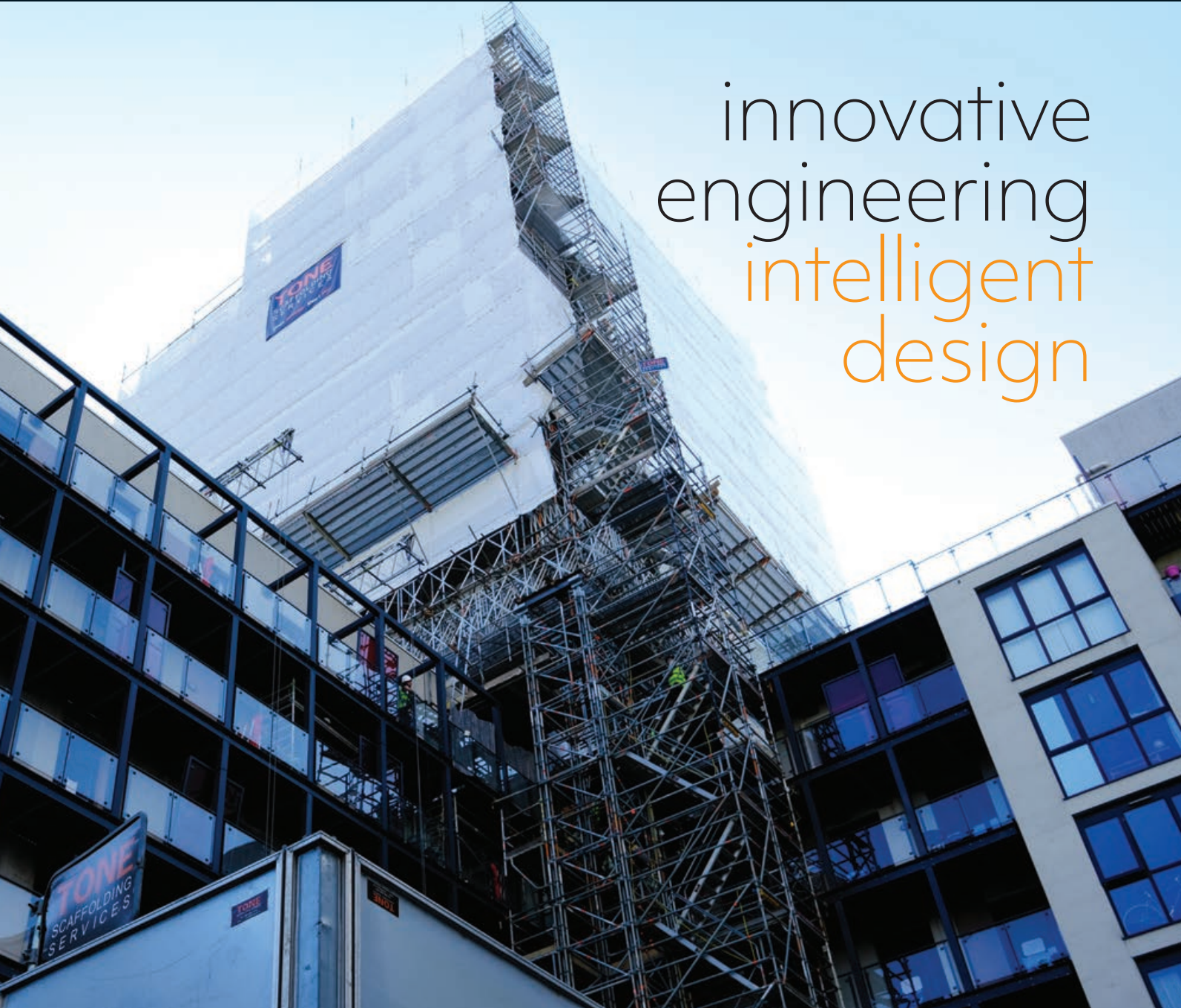
and most glamorous ex-naval establishment in the country. LTC installed tube and fitting scaffolding and HAKI loading bays and staircases around the eight-storey building and supported the complete front elevation from a designed beamwork bridging system. This was required as the ground conditions, projecting balconies and weather conditions – with the building exposed and close to the sea – presented safety challenges.

TONE[®]

SCAFFOLDING
SERVICES

ALWAYS **THINKING** ||| ALWAYS **SAFE**

innovative
engineering
intelligent
design



Call now: **020 3781 7771**

TONE Scaffolding Services HQ Green Lane Sawmills, Green Lane, Outwood, Redhill, Surrey RH1 5QP

Email: solutions@tonescaffolding.co.uk www.tonescaffolding.co.uk



THE UK'S LARGEST INDEPENDENT SCAFFOLDING SUPPLIER

With an agile supply chain,
whenever you need us.

OUR PRODUCTS

- ✓ Traditional Scaffolding
- ✓ System Scaffolding
- ✓ Light Access Equipment
- ✓ Temporary Weather Protection
- ✓ Formwork & Falsework
- ✓ Non-Mechanical Builders Plant



NATIONWIDE DELIVERY
WITHIN 48 HOURS



ONE OF THE LARGEST
STOCKS IN THE UK



COMMITTED TO
OUR VALUES



EXPERTS ACROSS
ALL SECTORS



WE SUPPORT UK
MANUFACTURING

CONSTRUCTION RAIL INDUSTRIAL OIL & GAS MARINE

GEORGE ROBERTS LTD, UNIT D, WAKEFIELD ROAD, NETHERTON, L30 6TZ LIVERPOOL, UK
+44 (0) 800 980 5130 ENQUIRIES@GEORGEROBERTS.COM WWW.GEORGEROBERTS.COM

OXBURGH HALL, NORFOLK

NASC member: Rise Scaffold Services Ltd

Main contractor: Messenger Construction/National Trust

Rise Scaffold Services Ltd was tasked with erecting full encapsulation scaffolding at Oxburgh Hall with full access for renovation works while providing full access for the public for the duration of the project.

The design considerations were very unusual, with the presence of a water-filled moat that could not be drained as the banks are reliant on the water pressure to remain in place.

The decision was made to spread the imposed load from the scaffolding evenly over an uneven bed with the use of submerged sub-sea sandbags. These were positioned in the moat, so they moulded to the contours of the base.

A Ubox roof was then constructed and rolled into position using the Dessa Trax system. Once in place, a pinned eaves bracket was installed to allow the structure to settle on the moat elevation without applying adverse displacement loads back into the scaffolding. The entire scaffolding was then covered in fire retardant sheeting. To allow for the installation of the steels and timbers, an internal Niko running beam system was installed to the underside of the temporary roof to resolve the clients manual handling issues.



SELFRIDGES, BIRMINGHAM

NASC member: Midland Scaffolding Services Ltd

Main contractor: BAM Construction

The refurbishment of the Selfridges store in Birmingham was anything but straightforward. Midland Scaffolding Services Ltd was brought in at design stage to provide guidance on how scaffolding could be erected to provide safe working platforms to the whole of the building, together with a temporary roof cover, to allow work to replace the outside render whilst the store was kept open and trading at all times.

This meant the designs had to incorporate both private tunnels 60 mtrs long for Selfridges staff as well as public tunnels and gantries due to the 24/7 bus stops that could not be closed or relocated.

The scaffolding around the building also posed an incredible challenge as the store curves longitudinally, vertically and horizontally. In fact, there is not one straight elevation in the whole project.

Oxburgh Hall's moat presented a unique challenge for scaffolding design

Selfridges has no straight elevations

Looking at the design drawings gave a much more detailed view of the challenges, starting with scaffolding that is 10 boards wide at the base extending to 24 boards wide at its maximum in the "belly" of the vertical face. This, as the design shows, was cantilever on cantilever on cantilever.

The scaffolding also had to be built in 2400, 3000 and 4000 facets to the whole length of the building, and the facet gap in the platform covered in a shaped section of 25mm ply. Midland had these made using state of the art laser cutters that also cut all edges at 45 degrees to ensure there were no trip hazards. There were more than 3,000 shaped ply facets fixed on this job.





FREEMASONS HALL, LONDON

NASC member: RPF Scaffolding Ltd

Main contractor: United Grand Lodge of England

RPF Scaffolding Ltd was commissioned by the United Grand Lodge of England to provide access to repair the unsafe and precarious ceiling mosaic murals in the iconic Grand Temple at their Headquarters in London's West End.

The remit was to supply a fully encapsulated double boarded platform to all elevations of the Grand Temple, undertaken out of hours to avoid any disruption to their daily operations but also to fully suspend the entire Structure from a total of 28 50mm ceiling tube pockets at 1.8m centres thus allowing meetings and events in the Temple to carry on seamlessly.

With the assistance of RDG Engineering, RPF designed and constructed four 24 metre long shrink-wrapped access platforms all suspended from a 96m long roof void gantry to support the load.

Above: the Freemason's Grand Temple

SOUTHAMPTON DOCKS

NASC member: Vision Scaffolding Solutions Ltd

Main contractor: DP World

Vision Scaffolding Solutions Ltd was contacted by DP World to urgently replace an existing scaffolding structure on site that had become unfit for use in providing access to refrigerated shipping containers used to store bananas and other produce as they arrive through the port.

There was an incredibly small timescale to design, obtain the scaffolding materials and erect the scaffolding due to the small

window before the next shipment containing thousands of items of produce that would become waste if the refrigerated containers were not up and running in time.

Vision used Plettac Metrix system scaffolding to complete the task, owing to both the product's efficiency in erection time and suitability as a long-term structure.

Standing at 6m high and 150m long complete with supporting buttresses, with the main scaffold consisting of a foot-tie lift, two decked lifts and two intermediate structural lifts, the access gantry was erected by five operatives in only four days.

Fitting around shipment times was a challenge at Southampton Docks





NORTHERN REGION PROJECTS

BENCHMARK SCAFFOLDING



Setting the Standards





By Appointment to
Her Majesty The Queen
Scaffold Contractor
Coventry Scaffolding
Company (London) Limited

COVENTRY

S C A F F O L D I N G

LONDON EST. 1950



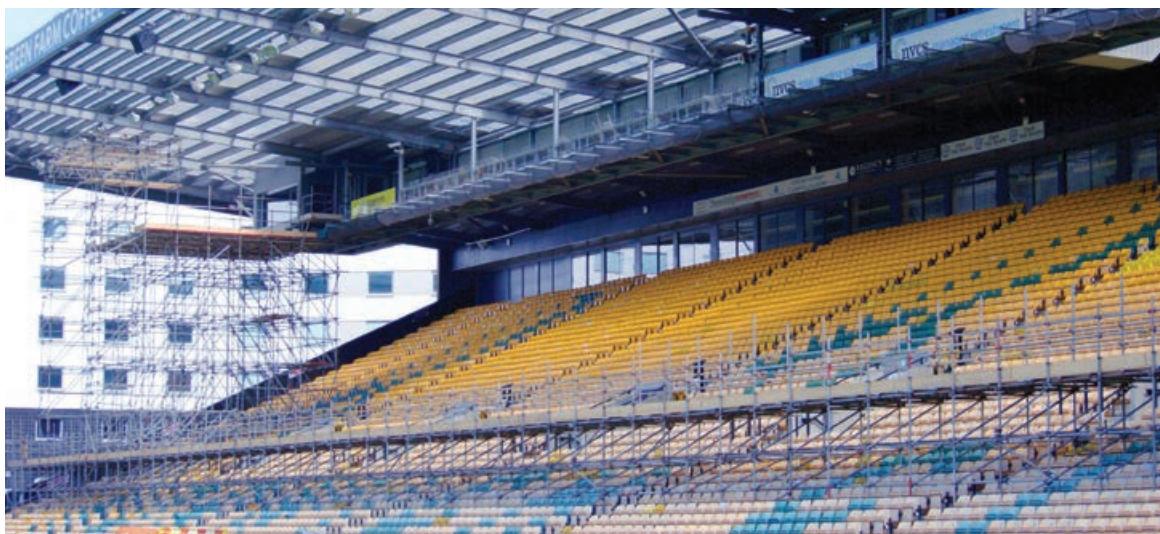
Theatre Royal, Drury Lane 2020

70 years of scaffolding success

Innovative scaffolding solutions since 1950

Traditional Scaffolds | System Scaffolds | Powered Access | Emergency Service 24/7-365
Media & Events Stands | Temporary Roofs | Crowd Control | In-house Design and Costings

As a Royal Warrant Holder, Coventry Scaffolding is no ordinary scaffolding company. We provide the same high level of service and customer care for office refurbishments and new build sites, as we do for any of the Royal Palaces we help restore. And as a full member of the NASC, we pride ourselves by working in the safest possible manner with a highly competitive pricing structure. However, we don't want to rest on our laurels and are constantly striving to improve the level of service we provide, helping to make us the best access and scaffolding contractor around.



NORWICH CITY FC

NASC member: Tubes Scaffolding Ltd

Main contractor: PJ Spillings

Main contractor PJ Spillings was contracted to replace four sections of glass above the media pods, a requirement for the club to hit Premiership criteria. The challenge was to replace the glass in one complete section.

Tubes Scaffolding Ltd worked closely with PJ Spillings to produce a bespoke design, which required the support, transportation and installation of glass panels to the gantry. The project involved two large loading towers either side, both of which had a 500kg runway beam on each tower. The towers provided a lifting beam to connect the glass and lift into the air. The loading capabilities of the scaffolding was way beyond what a TG20:21 scaffold would be.

Access was tricky too and materials had to be carried through stadium seating areas.

The timeframe to complete the project was a major challenge. The scaffolding was dismantled a day before the first match!

ST ANDREW'S HOUSE, EDINBURGH

NASC member: City Access Scaffolding Ltd

Main contractor: MPACT Group

City Access Scaffolding Ltd provided access for external repairs and restoration works on St Andrew's House, one of Edinburgh's most prominent listed landmark buildings.

The project consisted of a number of phases, each of which brought its own challenges, further complicated by inaccurate historical drawings.

This required City Access to adapt plans throughout the works and clear communication between the operative and management teams.

St Andrew's House



Glass installation at Norwich City FC

At the front elevation of the building, access was only required to reach seven large statues and decorative stonework and so bridging was utilised. Rather than bridge the entire length, City Access constructed a central tower, relieving the stresses of a major beam section and effectively creating two smaller bridges aided with pick-up tubes.

For the South Boundary Wall, a curved and returned retaining wall, set upon a steep and dangerous rock embankment, band and plate anchors were put into the stonework at the base level and 1m above, with a vertical tube between each band and plate and a tie tube connecting to both standards at each tie height.

PRESIDENT'S AWARD

Personal excellence

The NASC President's Award shines the spotlight on the often unsung heroes of the industry.

The NASC is fortunate that within its membership there are numerous individuals that play pivotal roles in

keeping standards high – employees that regularly go above and beyond their normal day-to-day duties.

The NASC President's Award recognises this; a selection of the nominees are showcased below.



▲ Doing the job of 12

Having joined Star Scaffolding Ltd as an apprentice in 2012, Alice Nelson's enthusiasm and dedication to 'get the job done' saw her rise to the position of office manager, a role in which she excels.

Alice's commitment to the business is unrivalled, which was proven during the peak of the Covid-19 pandemic. She volunteered to take the sole responsibility for ensuring emergency works were booked in, invoices completed, and job sheets returned.

In doing this she was able to keep the business running in what was an uncertain climate and covered the role of 12 people, who were subsequently able to stay at home and keep safe.



▲ Mental health hero

Ian Hines, regional SHEQ manager, has delivered mental health first aid training to more than 200 Lyndon SGB employees, clients and associated contractors on sites where they work. Beyond the day job, Ian maintains

his passion and drive for this subject through Mental Health First Services, a not-for-profit organisation set up to deliver mental health first aid, youth mental health and applied suicide intervention skills training (ASIST) to people in and around the Birmingham area. Ian also established the No Holes Barred Support Group, through which people have a safe place to talk to someone via anonymous Zoom calls.



▲ Youth work

Mike Wright, group head of HSEQ at Millcroft Services PLC, is charged with ensuring all company operatives maintain the highest health and safety standards and that working practices are continuously reviewed and improved.

He is also responsible for training and harnessing the potential of every individual that joins the business.

Over the past year, Mike has been the driving force behind initiatives that have inspired the whole team, while creating opportunity for young people and bringing new skills into the scaffolding industry.

Mike spearheaded Millcroft's Kickstart Scheme activities, through which six young people initially gained work experience with the business (and have now been offered full-

time positions), and is also actively involved in bringing new talent into the sector through volunteering for the Construction Youth Trust.



▲ Back office brilliance

With a positive approach and great communication skills, Steven Heather, M R Scaffolding Ltd's head of office operations, plays a vital role in ensuring a multitude of demands are met across the business.

He manages a number of back office teams, from HR and business support and training and development to operational and commercial administration. On top of this, Steven is a Mental Health First Aider who has embedded a culture of openness and trust that can be hard to establish in what is traditionally perceived as a macho environment.



▲ A driving force

Steve Collins, transport manager at Inspired Scaffolding Services Ltd, helped the company become the first scaffolding company in the UK to achieve an accreditation in the DVSA Earned Recognition Scheme as accredited vehicle operators.

Steve took ownership of the business management system for the business's transport department, implementing methods of improvement and change where required. He is regarded by his colleagues as a great ambassador for the industry and is respected for his passion for quality and getting things right.



K-Lock



K-Ring



K-Stage



- ✓ Manufactured at our own group factories
- ✓ Large distribution facility in Ipswich
- ✓ Delivering UK-wide
- ✓ NASC audited and approved



**TRADITIONAL
OR SYSTEM
SCAFFOLDING ?**

AFIXGROUP is the one-stop scaffold manufacturing and service expert. We deliver professional scaffolding systems and smart service solutions for construction, industry, infrastructure and event projects.



AFIX GROUP UK Ltd
Esgors Farm, High Road,
Thornwood, CM16 6LY | UK
+44 1992 946 355
office.uk@afixgroup.com
www.afixgroup.com



**JDC
SCAFFOLDING**

**COMMERCIAL ACCESS SCAFFOLDING FOR
LONDON & SURROUNDING AREAS**

**TEL: 020 8441 6446
EMAIL: SERVICE@JDC-SCAFFOLDING.CO.UK
WWW.JDC-SCAFFOLDING.CO.UK**



@JDCSCAFFOLDING



@JDCSCAFFOLDING



@JDCSCAFFOLDING



INNOVATION

Clever stuff

The Innovation of the Year category showcases NASC members' new products and processes designed to increase safety and efficiencies.

HAKI Ltd has simplified how designs are shared with the supply chain through HAKI BIM. The plugin simplifies, speeds up, and improves accuracy in the design process. Engineers using HAKI BIM can create exact 3D models and drawings of all types of HAKI scaffolding structures, reducing risk of error and delays.

Realistic rendering can also be applied to show a true-to-life representation of access, prior to build, and explored further in virtual reality using the HAKI Playground.

Layher Ltd entered a trio of products to the innovation award category; Layher Allround AGS system, Layher Allround Angled Loading Bay Decks and the Layher Allround Window Extension Bracket.

The AGS system simplifies and enhances facade scaffold installation,

while at the same time providing users with a safe, quick and versatile way of working. It comprises 2m standard[s], with integrated quick-release loading levers, in which the specifically developed guardrails slot into and are retained against falling out by means of a special milled slot.

The Angled Loading Bay kit comprises three wedge shaped decks that enable loading bay configurations to be angled. It was developed after housebuilders reported that most house building sites are very congested and that front on loading bays can often take up valuable space.

The Window Extension Bracket provides a useful new tool for the house-type scaffolding installations. Once fitted in place it allows two standards to sit inside the window, and partially under the pre-existing erected crash deck, and is guard railed off on one side, with the other abutted up to the wall/edge of the proposed window fitment. It provides a safe

additional platform to fit windows and upper floor doors safely.

JMAC Safety Systems's Universal Brickguard is compatible with traditional tube and fitting as well as all system scaffolding brands.

It is the only BrickGuard product to bypass the rosette on the ring system scaffold. It also fits securely over the obstacles created when the BrickGuard is fitted to Haki Scaffolding.

BrickGuard can be used on any handrail with a diameter between 30mm (Haki, Plettac, advanced guardrail), 48mm (conventional tubular guardrail), and Peri 60mm rectangular ledgers.

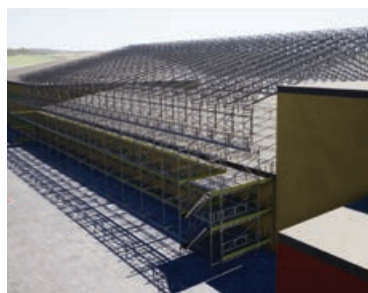
The **Connect Scaffolding Ltd** TW clip is a site-led solution to covering gaps and recesses between the scaffold and the face of a building when using Layher system scaffold. It allows adjustments to be made at the face of the building to work safely around complex profiles.

It improves safety as it reduces gaps and removes the need for gap cover planks, ply or scaffold boards which are often viewed as a trip hazard. It also means improved efficiency and sustainability due to a reduction in cutting of tube and ply to cover gaps.

The Scaffold Portal App has been developed by **Bilfinger Salamis UK** as a bespoke scaffold management platform tailored for the energy market.

It provides a simple and effective method of managing scaffold inventory on-site, that can be monitored remotely, and remain compliant with local regulatory requirements. Since its launch in July 2020, the app has been used to deliver over 150,000 scaffold inspections on over 40 client assets.

Tubes Scaffolding Ltd's branded UV wristbands change colour when there's too much UV exposure. They were created to ensure operatives protect their skin when working outside.



Clockwise from top left: Bilfinger's app; Connect TW clip; HAKI BIM; Layher Window Bracket



D&R SCAFFOLD

D&R Group plc

& CRADLES

ESTABLISHED SINCE 1965



Construction Line Gold Member

- Quality Assured ● CITB Trained Operatives ● Safety Officer ●
- Technical Support ● Cradle Division ● Cost-effective Appraisals ●
- Rapid Response Service ● 24Hr Emergency Service ●



E: info@drscaff.co.uk W: www.drscaff.co.uk

APPRENTICES

Rising stars

**Mark Davies, Lyndon SGB**

Mark fitted straight in at Lyndon SGB, showing a maturity and a work ethic beyond his years. Not only does Mark conduct himself impeccably, he considers others around him and is a role model to other apprentices. Perhaps the most telling indicator of Mark's skills and approach is that operatives and supervisors compete to have him in their gangs.

Adam McClennan, City Access Scaffolding Ltd

City Access described Adam as organised, efficient and a credit to the company. Chargehands often request him in their squads, saying he reads the job so well that he has materials ready before he's asked for them.

Left: Ben Rice

Below: Mark Davies

Below middle: Stephen Spriggs

Below left: Adam McClennan

The NASC continues to recognise the efforts and achievements of the next generation of scaffolding industry employees through its Apprentice of the Year category.

The NASC was delighted to receive 10 entries for the 2021 Awards and encouraged to see that technical and non-technical apprentices of all backgrounds and experiences are embarking on careers in the scaffolding industry.

Ben Price, Network Scaffolding Ltd

Ben was only 16 when he joined Network Scaffolding Ltd to work in its yard over summer. Having displayed a willing attitude and an eagerness to learn, he was taken on full time and enrolled on the CISRS Operatives Training Scheme (COTS) course. He has since completed his Part I qualification.

Ben's bosses praised his attention to detail, positivity and professionalism.

**Stephen Spriggs,****M R Scaffolding Services Ltd**

Stephen joined M R Scaffolding Services Ltd on a logistics and warehousing apprenticeship and has since shown great determination to succeed. Not only does Stephen manage to cover his own works and assist other yard members, he also takes time out to help apprentices getting into the industry settle in and become accustomed with the job.





James Harrison,
Rose System Scaffolding Ltd
James Harrison (above) is a digital apprentice who has really bought into the training offered to him by Rose System Scaffolding Ltd. He has become a trusted employee who is regularly given the responsibility to prepare designs, 3D models and animations for scaffold bids as well liaise directly with scheme foremen, enabling them to accurately order materials and overcome any challenges/obstructions that arise on site.

Amy Robinson,
Benchmark Scaffolding Ltd.
The sky's the limit for Part I qualified scaffolder Amy Robinson, according to her employer, Benchmark Scaffolding Ltd. Having swapped a career as a hairdresser for a scaffolder, Amy's tenacity, drive and teamwork skills have seen her identified as a future leader.



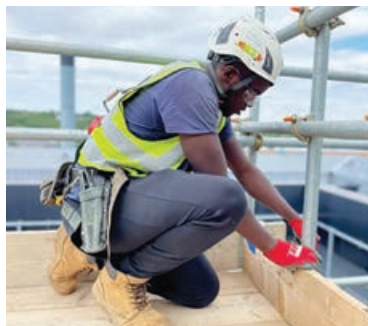
Aires Pontes, Harrison Witcomb, Bradley Taylor, Daniel Bradley,
Connect Scaffolding Ltd
Connect Scaffolding Ltd felt four scaffolding apprentices were worthy of special praise; Aires Pontes (known as Leo), Harrison Witcomb, Bradley Taylor and Daniel Bradley.

Leo joined Connect at the age of 19, with little work experience and initially seemed quite timid. However, since going out on site his confidence has flourished and he has become a valuable member of the team.

Similarly, Harrison's confidence and self-belief have gone from strength to strength since going out onto site, making him a great example for those less experienced. He takes great pride in the work and projects he is a part of, ensuring that excellent health and safety standards are always at the heart of everything he carries out.

Dan joined Connect at the age of 19 and has always shown a great can-do

Clockwise from top right: Daniel Bradley, Bradley Taylor, Aires Pontes, Amy Robinson and Harrison Witcomb



attitude. He listens to instruction and has the confidence to ask questions where he feels he needs too. A trustworthy individual, he learns quickly and is always keen to improve upon his own skills with the knowledge of those more experienced around him.

Bradley continuously impresses his colleagues, clients and tutors with his mature attitude and his willingness to put in the extra hours to ensure that the site team always delivers a high-quality service. He will always make the time to help less experienced trainees. His enthusiasm for scaffolding and for the company makes him a great role model and an example to look up to.



The winner of the NASC Apprentice of the Year will be announced at the NASC AGM, Ball & Awards, being held at Celtic Manor Resort, Newport, in November 2021. For more information visit www.nasc.org.uk

Chris Sedgeman SCAFFOLDING LTD

www.sedgeman.co.uk PENZANCE 01736 364562

RECOMMENDED FOR RELIABILITY & SERVICE THROUGHOUT THE SOUTH WEST

Chris Sedgeman Scaffolding is an award winning company that specialises in the supply of scaffolding to meet the requirements of all our clients needs.

- *Competitive Rate*
- *Fast & Reliable Service*
- *PL, EL & PI Insurance*
- *Specialist jobs welcome*
- *CISRS Carded operatives*
- *Commerical & Domestic*
- *Approved by local authorities*
- *CHAS, SMAS, NASC & CQMS – SSIP*
- *RISQS & UVDB*



● Tel: 01736364562 ● Email: enquiries@sedgeman.co.uk

Unit 2a Longrock Industrial Estate, Penzance, Cornwall. TR20 8HX



SAY GROUP
NORTHERN MIDLANDS
ACCESS & SCAFFOLDING

T: 01937 848480
 E: info@sayltd.co.uk
 W: www.sayltd.co.uk

For all your access solutions

- Layher all round access scaffolds
- Tube & fitting access scaffolds
- Temporary roofs
- Temporary staircases
- Façade retention & shoring scaffolds
- Confined space working
- Site hoardings
- Trackworks
- 24 hour service, 7 days a week
- Engineers drawings & calculations
- Labour only service



NASC MEMBER UPDATE

Standard bearer



The NASC is the leading trade body for access and scaffolding in the UK and the most prestigious and respected scaffolding members' organisation.

The Confederation currently has 235 contractor members – employing 16,000+ operatives between them. These contractors account for 80% of the UK's annual scaffolding spend, with a combined annual turnover in excess of £2bn.

Members must meet a rigorous set of criteria to attain NASC full contractor membership and maintain these standards in order to retain it.

NASC membership has long been recognised as an indicator of excellence by the construction industry, demonstrated by the countless number of main contractors that place a 'NASC only' requirement at the heart of their scaffolding procurement policies.

Karen Jones, director of Lea Scaffolding & Access Ltd, said: "The opportunity to join the NASC provides us with a highly regarded and well recognised accreditation within the industry, which opens up doors to work with new clients.

"Equally importantly, the NASC provides an infrastructure, which offers support, guidance and advice, which enables us to work safely, compliantly and provides opportunities to take advantage

of funding initiatives, such as the Kickstart programme."

Chris Watkinson, head of operations – industrial services at Taziker Industrial Services Ltd, added: "Being a member of NASC gives Taziker and its clients the reassurance that all our access solutions are built with 100% compliance and using good practice. It means we can grow as a business directly aligned with current innovations and up to date technical guidance. Membership also fits in with our business model of having a directly employed workforce who we want to invest in for the future."

The NASC is proud to have a further 26 supplier members, representing the majority of the UK's scaffolding hire, sales and manufacturing community.

Each of these members has passed stringent membership criteria which includes completing the NASC Code of Practice (CoP) product audit.

There are also 17 NASC Design members, a category of membership open to UK-based scaffolding design consultants that meet requirements relating to competence – a combination of qualifications and experience.

New 2021 members

Contractor:	
Castle Scaffold (Northern) Ltd	North Shields
Deva Scaffolding Ltd	Deeside
Infiniti Scaffolding Ltd	Scarborough
Lea Scaffolding & Access Ltd	Bolton
PDL Scaffolding Ltd	Widnes
P & G Scaffolding Ltd	Aylesham
P James Construction	Tyne & Wear
PJC Scaffolding Solutions Ltd	Oldham
SWC Scaffolds Ltd	Bristol
Taziker Industrial Ltd T/A Taziker Industrial Services	Heywood
Supplier:	
Afix Group UK Ltd	Epping
Design:	
Double Scaffold Design Ltd	Westcliff-on-Sea
Engineering Techniques Ltd	London
JM Scaffold Design Ltd	Leyland
Information:	
Clarke Health and Safety Consultants Ltd iPhorms Ltd	Liverpool
iPhorms Ltd	Macclesfield
J Mac Safety Systems Ltd	Stockton-on-Tees
McCarron Coates Ltd	Leeds
International Information:	
Flannery Health & Safety Ltd	Thurles
National Construction Training Centre (LOETB)	Offaly

NASC Committees

CURRENT AFFAIRS

Sarah Klieve (chair) High Peak Scaffolding Ltd
Catherine Brown Actavo (UK) Ltd
Gary Coote CCS Scaffolding Ltd
Phil Hinch Brand Energy & Infrastructure Services UK Ltd T/A Lyndon SGB
Mike Wright Millcroft Services PLC
David Mosley NASC/CISRS
Robin James NASC
Simon Robinson NASC
Henry Annafi NASC
Danny Dwyer PHD Modular Access Services Ltd
Anthony Houghton Shield Environmental Services Ltd
Kate Thomson Thomson Scaffolding Ltd
Chris Hilton Vision Scaffolding Solutions Ltd

MARKETING

Steve Fellows (chair) Malvern Scaffolding Ltd
Lynn Way Chris Sedgeman Scaffolding Ltd
Helen Gawor GKR Scaffolding Ltd
Sean Pike Layher Ltd
Jamie McGuire NASC
Robin James NASC
Simon Robinson NASC
Lydia Chard Star Scaffolding Ltd

ASITO

Mike Burr (chair) LTC Group 87
Andy Gaynor Allied Scaffolding Ltd
William Somerville Altrad Services UK
James Lewis Brogan Group Ltd
Lynn Way Chris Sedgeman Scaffolding Ltd
Aled Hughes CITB
Lester Brown HAKI Ltd
Sean Pike Layher Ltd
Phil Hinch Brand Energy & Infrastructure Services UK Ltd T/A Lyndon SGB
Dan Wilson Mar Scaffolding Ltd
Henry Annafi NASC
David Mosley NASC/CISRS
Sean Johnston NETA Training Group
Rick Statham Safety & Access Ltd
Tony Gibbs Simian Risk Management Ltd
Lydia Chard Star Scaffolding Ltd
Amanda Riding Training 2000 Ltd
Meurig Thomas Unite the Union

AUDIT

Wayne Connolly (chair) Connolly Scaffolding Ltd
David Anderson Allen & Foxworthy Ltd
Mark Davenport Auditor
Ian Fyall Auditor
Alastair O'May Auditor
Craig Penketh Auditor
Paul Turner Auditor
Kevin Ward Auditor
Alan Lilley Commercial Scaffolding Ltd
Darren Maratty Interlink Scaffolding Ltd
Ronnie Charters JR Scaffold Services Ltd
Mike Lloyd LTC Scaffolding Ltd
Jamie McGuire NASC
Phil Heffernan Scaffold Erection Services Ltd

CONTRACTS

Matthew Cousins (chair) Apex Scaffolding (Exeter) Ltd
Trevor Clarke Amber Scaffolding Ltd
Lynn Way Chris Sedgeman Scaffolding Ltd
Dave Battison Fred Champion Scaffolding Ltd
Andy Thomas H&H Contract Scaffolding Ltd
Liz Bridge Joint Taxation Committee
Ian Fyall Simian Risk Management Ltd
Simon Christopher Scaffold Services Ltd
Mark Chard Star Scaffolding Ltd

HIRE, SALES & MANUFACTURING

Sean Pike (chair) Layher Ltd
Sarah Wilson (vice chair) Gilray Plant Ltd
Paul Norris Actavo (UK) Ltd
Chris Viney Afix Group UK Ltd
Joachim Gundersen Alustar AS UK
Richard L'Herroux AT-PAC Ltd
Gary Pinkney BD Pinkney & Co Ltd
Steve Masters Brisko Scaffolding Ltd
Tommy Ross CCB Scaffolding Supplies
Alan Scott Enigma Industrial Services Ltd
Matt Shore Forgeco Ltd
Mark Clifford Generation (UK) Ltd
Matt Johnson George Roberts (NW) Ltd
David Probert Haki Ltd
Phil Marks PCP Gratings Ltd
Alasdair Stables Peri Ltd
Tom Steele PSB Sales Ltd
Jerry Watts (Auditor) QSI Ltd
Jeff Wood Ramsteel Tubes Ltd
Grant Norfolk Rotamead Ltd
Gordon Pilling St Helens Plant Ltd

Alan Slater TRAD Hire & Sales
Ashleigh Grainger Trademagic Ltd
Gary Griffiths UK System Scaffold Hire Ltd

TECHNICAL

James Attridge (chair) JFE Attridge Scaffolding Services Co Ltd
Ryan Clegg Bilfinger Salamis UK Ltd
Priscila Escobar HAKI Ltd
Ivik Masek 48.3 Scaffold Design Ltd
Steve Prower Actavo (UK) Ltd
Tony Jenkins Altrad Dessa
Jason Black Brand Energy Infrastructure Services UK Ltd T/A Lyndon SGB
Colin Murphy Cape Industrial Services Ltd
Martin Nicholas Chris Sedgeman Scaffolding Ltd
Matt Shore Forgeco Ltd
Wayne Lovelock Formula Scaffolding Ltd
Ricky Mair Highland Temporary Works
Jan Andresen HSE
Nick Geddes Layher Ltd
Matthew Brewin Lindway Scaffolding Ltd
Ian Nicoll Nicoll Reid Associates
Russ Marlow Optima Scaffold Designs LLP
Charles Stratford Peri Ltd
Ray Kellard Scaffold Designs Ltd
Stuart Salmon TR Scaffolding (Bristol) Ltd
Stephen Corden Wood Group Industrial Services Ltd

HEALTH & SAFETY

Alan Harris (chair) Pro-Fix Access Ltd
David Anderson Allen & Foxworthy Ltd
Peter Booth Benchmark Scaffolding Ltd
Ryan Clegg Bilfinger Salamis UK Ltd
Mark Collinson Brand Energy & Infrastructure Services UK Ltd T/A Lyndon SGB
Pat Walsh Altrad Services Ltd
Roy Rogers Enigma Industrial Services Ltd
Jo-Anne Michael HSE
Adrian Rooney Midland Scaffolding Services Ltd
David Mosley NASC/CISRS
Rick Statham Safety & Access Ltd
Simon Hughes Simian Risk Management Ltd
Kate Thomson Thomson Scaffolding Ltd
Steve Kearney TRAD Group

CISRS approved training providers

SCOTLAND & NORTHERN IRELAND

AIS Survivex

Aberdeen
0844 8001810
www.aisgroup.co.uk

All Access Training Services

Glasgow
0141 8822555
www.allaccesstraining.co.uk

ASET International Oil & Gas Training Academy

Aberdeen
01224 896196
www.aset.co.uk

CITB NI

Co. Antrim
02890 825 466
www.citbcsni.org.uk

Enigma Industrial Services Ltd

Renfrewshire
07484 929072
www.enigma-is.com

Excel Training International

Paisley
Tel. 0141 416 9865
www.etihealthandsafety.com

National Construction College

Renfrewshire
0344 9944433
www.citb.co.uk/training

NORTH EAST

AIS Survivex

North Shields
0844 8001810
www.aisgroup.co.uk

NETA Training Group

Stockton-on-Tees
01642 616 936
www.neta.co.uk

Safety and Access Ltd

Stallingborough
01469 552848
www.safetyaccess.co.uk

NORTH WEST

Fulcrum Scaffold Safety & Training

Blackburn
Tel 0203 4882297
Flintshire
07725 321562
www.fulcrumscaffoldsafety.com

Fulcrum Scaffold Safety & Training Ltd

Flintshire
07725 321562
www.fulcrumscaffoldsafety.com

Lawsons Training Ltd

Workington
01946 833313
www.lawsontraining.co.uk

Simian – CIST

Anglesey
0345 602 2418
www.simian-risk.com

Simian

Warrington
0345 6022418
www.simian-skill.com

Total People

Manchester
0161 674 7822

Training 2000

Blackburn
01254 54659
www.training2000.co.uk

YORKSHIRE

3B Training

Doncaster
01942 597 333
www.3btraining.com

MIDLANDS

Construction College Midlands

01922 663600
www.constructioncollege.co.uk

HAKI Ltd

Milton Keynes
01827 282525
www.haki.co.uk

Safety & Access Ltd

Nottingham
0115 979 4523
www.safetyaccess.co.uk

Simian Aspects Training Ltd

Coventry
0345 602 2418
www.simian-risk.com

EAST ANGLIA

Britannia Safety & Training

Wymondham
Tel. 0800 019016/01953 606100
www.britanniaits.com

National Construction College

Kings Lynn
Tel: 0344 9944433
www.citb.co.uk/training

SOUTH EAST

CHSG – Construction Health & Safety Group

Chertsey
01932 561 871/563 121
www.chsg.co.uk

Layher Ltd

Letchworth
01462 475 100
www.layher.co.uk

National Construction College (South)

Erith, Kent
0344 9944433
www.citb.co.uk/training

PERI Ltd

Brentwood
01788 861600
www.peri.ltd.uk

Safety Services (UK) Ltd

Oxfordshire
Tel 0845 4025050
www.safetysservices.co.uk

Simian – Carshalton College

0345 6022418
www.simian-skill.com

Simian

Waltham Forest
0345 602 2418
www.simian-risk.com

SOUTH WEST & SOUTH WALES

AIS Survivex

Bridgend
0844 8001810
www.aisgroup.co.uk

Alpha Safety Training

Swansea
01792 585868
www.alphasafety.co.uk

CWIC Scaffolding Academy

Swansea
01792 482022
www.cwiccaffoldingacademy.co.uk

LTC Training Services Ltd

Plymouth
01752 485303
www.ltctrainingservices.co.uk

LTC Training Services Ltd

Cullompton, Devon
01884 664224
www.ltctrainingservices.co.uk

QCF Developments

Cardiff
01656 331261

Simian – Weston College

Weston-Super-Mare
www.simian-skill.com



**ALL ACCESS
TRAINING SERVICES
LIMITED**

SCAFFOLDING TRAINING AND INSPECTION SERVICES

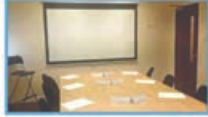
CISRS ACCREDITED TRAINING CENTRE

CISRS SCAFFOLD INSPECTION TRAINING SCHEME (SITS)
CISRS COTS
CISRS SYSTEM SCAFFOLD PRODUCT TRAINING

TRAINING COURSES NOW AVAILABLE!!

- >Safety Harnesses
- >Scaffold Appreciation and Inspection
- >Scaffold Anchor Installation and Testing
- >SG4: Preventing Falls in Scaffolding
- >Hop Ups and Handrails
- >Work at Height Awareness
- >Scaffold Rescue Course
- >Scaffold Awareness
- >Various System Product Knowledge Training

INCLUDING: CLIPLOK, HARK, LAYHER, PLETTAC METRIX, KWRSTAGE AND AT-PAC.



Fully compliant with current
Covid-19 guidelines.



Training carried out by industry experienced instructors
CISRS accreditation to offer a portfolio of CISRS courses
Training available at our Glasgow facility, onsite or your premises*
Training Courses tailored to suit our client's needs
Five spacious training rooms available for rent*
(*Subject to Conditions)

Tel: 0141 882 2555 or 07595 012 866 admin@allaccesstraining.co.uk
76 Queen Elizabeth Ave, Hillington, Glasgow, G52 4NQ
www.allaccesstraining.co.uk



**DEFINING ACCESS
SOLUTIONS**



SCAFFOLDING



HOISTS



COMMON TOWERS



MAST CLIMBERS



CRANE DECKS

brogangroup.com 0333 358 0007 **BROGAN GROUP**



Suppliers of scaffolding and specialist access solutions to the utilities sector and associated contracts throughout the UK.



- Electrical Sub Stations
- Gas Installations
- Water Works
- In House Design
- EURS Utilities Trained Staff
- National Coverage
- Quick response time
- Large stocks of scaffolding materials and lifting equipment

Power & Utility Scaffolding Specialists

T: 01924 255 222 E: info@cascaffolding.co.uk W: www.cascaffolding.co.uk
Complete Access Scaffolding Ltd, Crigglestone, Industrial Estate, Wakefield WF4 3HT



For all your scaffolding requirements throughout the North West Area

A member of



NATIONAL ACCESS & SCAFFOLDING CONFEDERATION

Freephone: 0800 6528545

Fax: 01282 4111174

Pomfret Street, Burnley,
Lancashire, BB11 4AF

Email: cwrscaffolds@btconnect.com

Web: www.cwrscaffolds.co.uk

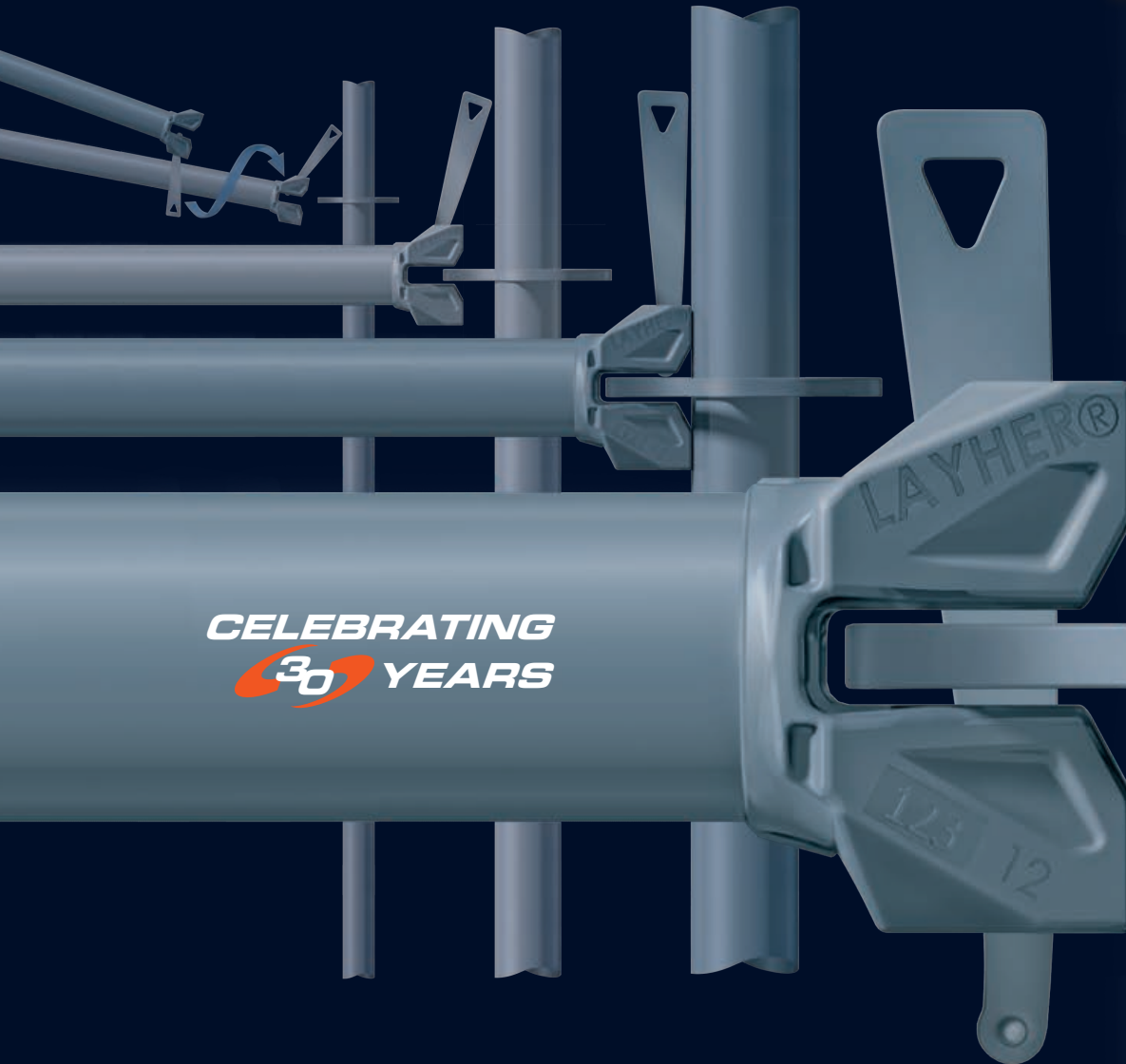


DIRECTORY

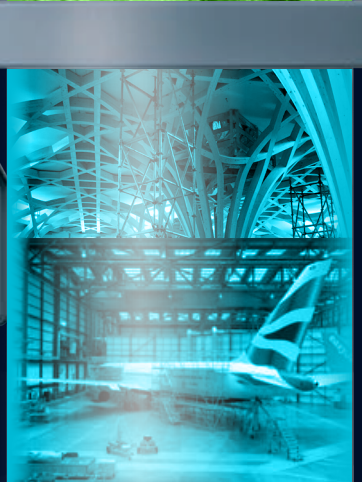
LIST CORRECT AT THE TIME OF GOING TO PRESS. FOR AN UP-TO-DATE LIST OF NASC MEMBERS AND FURTHER INFORMATION ON THE SERVICES THEY PROVIDE VISIT WWW.NASC.ORG.UK

CONNECT

**SAFER,
EASIER,
QUICKER...
BETTER CONNECTED!**



**CELEBRATING
30 YEARS**



SCAFFOLDING

estimating@connectscaffolding.co.uk



HOISTS

hoists@connectscaffolding.co.uk



EVENTS

events@connectscaffolding.co.uk

Call: 01279 757113

Visit: www.connectscaffolding.co.uk

NASC
CONTRACTOR MEMBER

OPTIMA
Scaffold Designs LLP

Experienced Scaffold Engineers
National Coverage
Efficient Design Solutions
Prompt Service

BRISTOL OFFICE
68 Macrae Road
Eden Office Park
Pill
Bristol
BS20 0DD
Tel: 01275 393944

LONDON OFFICE
The Old Chapel
69 Primrose Hill
Kings Langley
Hertfordshire
WD4 8HX
Tel: 01923 269146

BD PINKNEY & CO
SCAFFOLDING REFRUBISHMENT

The United Kingdom's longest established scaffolding refurbishment company.

From our base in Central Scotland we service the whole of the UK.

Our services include full refurbishment of
KWIKSTAGE
STEELSTAGE
SCAFFOLD FITTINGS
FORMWORK, KWIKGUARD / LOADING BAY
GATES ALL NON MECHANICAL PLANT

Pinkney's aim is to continue providing a personal, hands on and highly committed approach to achieving excellence in scaffolding refurbishment and repairs.

BD Pinkney & Co
Unit 5, Northburn Road
Coatbridge, Lanarkshire, ML5 2HY
T: 01236 426 777
M: 07836 258 053 or 07831 499 684
E: giles@pinkneys.net
W: www.bdpinkney.co.uk

K Scaffolding Ltd

Providing you with *the right support*

- Contract Scaffolding
- Specialist Housing Team
- System temporary roof specialists
- Long Term members of the NASC
- Highly Accredited
- CITB Permanent and fully trained workforce
- £10m liability cover
- Excellent reputation within the industry
- Scaffold Inspections
- Established over 20years

☎ 01869 345 999
🌐 www.kscaffoldingltd.co.uk
Souldern Gate, Banbury Road, Souldern,
Bicester, Oxfordshire, OX27 7HT

NASC R-SPA Member SAFETY Constructionline Achilles Acclaim CISRS NASC NWBC SIMAN SIPP G333 smas Bellway NASC

Rowecord Total Access Ltd
Kemys Way, Swansea Enterprise Park,
Swansea SA6 8QF
T: 01792771405
E: general@rowecordtotalaccess.com
www.rowecordtotalaccess.com

Rowland Scaffold Co Ltd
Rowland House, 274 Attercliffe Road,
Sheffield S4 7WZ
T: 0114 275 5752
E: tony.rowland@rowlandscaffold.co.uk
www.rowlandscaffold.co.uk

RPF Scaffolding Ltd
284 High Road, North Weald, Essex CM16 6EG
T: 01992 524411
E: info@rpfsc scaffolding.co.uk
www.rpfsc scaffolding.co.uk

S

S.A.S. Ltd
Foster Street, Stoneferry Road, Kingston upon
Hull HU8 8BT
T: 01482 610488
E: sgsltd@sgsltd.co.uk
www.sgsltd-scaffolding.com

S.N. Scaffolds LLP
Access House, Windsor Bridge Road, Bath
BA2 3DT
T: 01225 448352
E: info@snscaffolds.co.uk
www.snscaffolds.com

S.R.K. Scaffolding Ltd
Haywards Lane, Chelston, Wellington, Somerset
TA21 9FD
T: 01823 650792
E: info@srk.org.uk
www.srksc scaffold.co.uk

S.Y.S. (Scaffolding Contractors) Ltd
Old North Ropery Works, Carr Hill, Balby,
Doncaster DN4 8DE
T: 01302 340132
E: sysltd@syscaffolding.com
www.syscaffolding.com

S & K Scaffolding Ltd
Lotus House, Deer Park Farm Industrial Estate,
Knowle Lane, Fair Oak, Eastleigh, Hampshire
SO50 7DZ
T: 01794 324768
E: info@sandkscaffolding.co.uk
www.sandkscaffolding.co.uk

S & P Scaffolding Ltd
Caspian House, Clay Street, Hull HU8 8HA
T: 01482 824321
E: phil@s-pscaffolding.co.uk
www.s-pscaffolding.co.uk

Safe Access Scaffolding (Midlands) Ltd
Rock House, Belfield Street, Ilkeston,
Derbyshire DE7 8DU
T: 0115 932 7878

Safe Scaffolding Midlands Ltd
54 Swadlincote Road, Woodville, Swadlincote,
Derbyshire DE11 8DE
T: 01283 550645
E: enquiries@safesc scaffolding.co.uk
www.safesc scaffolding.co.uk

Safeway Scaffolding Ltd
Unit 41, Station Road, Coleshill, Birmingham
B46 1JB
T: 01675 465593
E: info@safewayscaffolding.co.uk
www.safewayscaffolding.co.uk

SAY Scaffolding (Northern) Ltd
Say House, Unit 2 & 3, Rudgate Business Centre,
Thorp Arch Industrial Estate, Wetherby, West
Yorkshire LS23 7AU
T: 01937 848480
E: reception@sayltd.co.uk
www.sayltd.co.uk

SBS Scaffolding (Power) Ltd
27 Churchill Drive, Mildenhall, Suffolk IP28 7DA
T: 07971 987306
E: peter@sbssc scaffolding.com
www.sbssc scaffolding.com

Scaffold Erection Services Ltd
221-225 Tyburn Road, Erdington, Birmingham
B24 8NB
T: 0121 322 2088
E: info@scaffolder.co.uk
www.scaffolder.co.uk

Scaffolding 4 MGB Ltd
Unit 9, Bakers Park, Cater Road, Bishopsworth,
Bristol BS13 7TT
T: 0117 946 5024
www.scaffolding4mgb.co.uk

Scaffolding Access Solutions Ltd
Richard Alan House, Shaw Cross Business Park,
Dewsbury, West Yorkshire WF12 7RD
T: 01924 485372
E: info@scas.co.uk
www.scas.co.uk

Scaffolding Solutions (Wales) Ltd
Plot 11, Heol Ty Gwyn Industrial Estate, Maesteg,
Bridgend CF34 0BQ
T: 01656 810235
E: info@scaffoldingsolutionswales.co.uk
www.scaffoldingsolutionswales.co.uk

Scaffold Services Ltd
Hawarden Avenue, Leicester LE5 4NN
T: 0116 276 8125
E: sales@scaffoldservicesltd.co.uk
www.scaffoldservicesltd.co.uk

SCA Group Ltd
7 Crane Way, Woolsbridge Industrial Park, Three
Legged Cross, Wimborne, Dorset BH21 6FA
T: 01202 820820
E: sales@sca-group.com
www.sca-group.com

Sevenside Scaffolding Ltd
Morley House, Llanthony Road, Gloucester
GL2 5HL
T: 01452 529601
E: dave@sevensidemorley.co.uk
www.sevensidemorley.co.uk

**Shield Environmental Services Limited T/A
Shield Services Group**
Unit 4E, The Coachworks, Kingsfield Lane,
Bristol BS30 6DL
T: 0117 960 6366
www.shieldservicesgroup.com/services/scaffolding

Silver Star Services Ltd
Unit 4, Palm Business Centre, Stock Lane,
Chadderton, Oldham OL9 9ER
T: 0161 665 0828
www.silverstar-services.co.uk

Skill Scaffolding Ltd
Skill House, Andes Road, Nursing,
Southampton SO16 0YZ
T: 02380 777750
E: enquiries@skillscaffolding.co.uk
www.skillscaffolding.co.uk

Sky Scaffolding (Midlands) Ltd
Nicolet House, Budbrooke Road Industrial
Estate, Budbrooke Road, Warwick CV34 5XH
T: 01926 400900
E: enquiries@skyscaffolding.co.uk
www.skyscaffolding.co.uk

Sonic Scaffolding 2000 Ltd
Wyndhams Dairy, High Post Road,
Winterbourne, Dauntsey, Salisbury SP4 6HG
T: 01980 619114
E: info@sonicscaffolding2000.co.uk
www.sonicscaffolding2000.co.uk

South Lincolnshire Scaffolding Ltd
Tenens Way, Riverside Industrial Estate,
Boston PE21 7PA
T: 01205 363366
E: peter@sllsLtd.com

www.sllsLtd.com

Speedier Scaffolding Ltd
Manchester Road, Westhoughton,
Bolton BL5 3QH
T: 01942 841919
www.speedierscaffolding.com

Staffordshire Access Scaffolding Ltd
Unit 4, P A Wood Estates, Park Lane, Fenton,
Stoke-on Trent ST4 3JP
T: 01782 593189
E: info@staffordshire-access-scaffolding.co.uk
www.staffordshire-access-scaffolding.co.uk

Standard Scaffolding Specialists Ltd
131A Church Street, Little Lever, Bolton BL3 1BW
T: 01204 574064
E: standardscaffolding@hotmail.com
www.standardscaffolding.co.uk

Stanford Scaffolding Ltd
2 Tonbridge Road, Romford RM3 8QE
T: 01708 343427
E: info@stanfordscaffolding.co.uk
www.stanfordscaffolding.co.uk

Star Scaffolding Ltd
Pikehelve Street, West Bromwich B70 0TU
T: 0121 505 6366
E: info@star-scaffolding.co.uk
www.star-scaffolding.co.uk

St Helens Plant Ltd
SUPPLIER MEMBER
2nd Floor, Bold Industrial Plant, St Helens
WA9 4XG
T: 01744 850300
E: info@sthp.co.uk
www.sthelensplant.co.uk

Summit Marine Scaffolding Ltd
Unit 1, Summit Park, Sefton Lane Industrial
Estate, Maghull L31 8BX
T: 0151 526 7509
E: info@summitscaffolding.com
www.summitmarinescaffolding.co.uk

Swale Scaffolding Ltd
Gatherley Road Industrial Estate, Brompton on
Swale, Richmond DL10 7JQ
T: 01748 812777
E: sarahrb@swalegroup.com
www.swalegroup.com

SWC Scaffolds Ltd
Unit 2 Goodneston Road, Fishponds, Bristol
BS16 3JX
T: 01454 228836
E: projects@swcsc scaffolds.co.uk
www.swcsc scaffolds.co.uk

SW Scaffolding Ltd
Rear of Park Farm, Spratton Road, Brixworth,
Northamptonshire NN6 9DS
T: 01604 881731
E: admin@sw-scaffolding.co.uk
www.sw-scaffolding.co.uk

T

Tamworth Scaffolding Company Ltd
25 Marsett, Wilecote, Tamworth B77 4QU
T: 01827 892900
E: enquiries@tamsc aff.co.uk
www.tamsc aff.co.uk

**Taziker Industrial Ltd T/A Taziker Industrial
Services**
Unit C, Birch Industrial Estate, Whittle Lane,
Heywood OL10 2SX
T: 0344 880 0385
E: info@taziker.com
www.taziker.com

Thomson Scaffolding Ltd
The Yard, Shelone Road, Briton Ferry,
Neath SA11 2NS
T: 01639 822955
E: admin@thomsonsc scaffoldingltd.co.uk



strike mobile

Now available

Improve e-fficiency!

Straightforward to use and with all the support you'll ever need. Access documents, complete job sheets, handovers, inspections, tie tests, variations and a host of other reports in an instant!

Software for scaffolders designed by scaffolders.

Call 01920 823 740 for a free demo



Software for the scaffolding industry

sales@strikesoft.co.uk www.strikesoft.co.uk



DARTFORD

Tel: 01322 271554

Mob: 07860 478180

www.redscaffoldinglimited.com

35 YEARS

Member of





National Access & Scaffolding Confederation

CELEBRATING
25 YEARS
OF DESIGN
EXCELLENCE

EST. 1995

SCAFTEC

SCAFFOLD DESIGN CONSULTANTS



Established in 1995, Scaftec can ensure that your scaffold / project is fully compliant with current standards / HSE guidelines. 5.0 Million P!

Our fully qualified and experienced engineers provide specialist scaffold design services Onshore & Offshore, UK & Internationally.

Scaftec Ltd
8 Lonmay Place, Panorama Business Village, Glasgow G33 4ER
T.+44 141 771 4400 | E.info@scaftec.com
W.www.scaftec.co.uk




Tidworth Military Garrison Gymnasium:

Believed to have the largest unsupported span in the country at the time of 38.5m and with a 2200m² coverage. Using 1.3m X-beams and tied down with ground anchors, the roof was 100% watertight throughout the project.

01252 660666

www.ideal-scaffolding.com



32A STURT ROAD, FRIMLEY GREEN, CAMBERLEY, SURREY, GU16 6HY

HPS
ACCESS SOLUTIONS

01298 767454

www.highpeakscaffolding.co.uk

ANCILLARY ASBESTOS LICENCE
COST EFFECTIVE AND EFFICIENT
30+ YEARS EXPERIENCE

High Peak Scaffolding Ltd.

Unit 6 Waterswallows Industrial Park, Waterswallows Road, Buxton SK17 7JB



ASW Scaffolding
Keeping you safe, whatever the level

TEL: 01639 711 166 MOB: 07976 250 920 WEB: absolute-scaffolding-wales.co.uk



- Established in 1992.
- Over 100 Employees all with CISRS cards.
- In house, fully trained Health and Safety Department.
- Capable of undertaking any project.

WHAT CAN WE DO FOR YOU?

- Infrastructure
- Major Projects
- Internal Access Solutions
- Shrink Wrapping
- Minor Works

☎ 023 8077 7750

✉ www.skillscaffolding.co.uk

📍 Skill House, Andes Road, Southampton, SO16 0YZ





Omega Scaffolding Solutions Ltd
Basic To Complex Design

**SECURE SCAFFOLDING SERVICES
THROUGHOUT BILSTON,
WOLVERHAMPTON, THE WEST MIDLANDS
AND THE WHOLE OF THE UK**

We have been providing our first class services to businesses and domestic customers in the area since 2012. 30 years of combined experience enables us to provide the services that we do.

Our environmentally friendly ethos and exceptional safety standards are two of the big reasons that we see so many return customers, so get in touch with us today to enjoy a reliable and swift service. For your peace of mind we are members of a number of associations that back the work we do.

CONTACT

Jason Newton | 07974434866 Mark Skyley | 07981288983 Neil Barinfield | 07557348905
jason@omegascaffoldingolutionsltd.co.uk mark@omegascaffoldingolutionsltd.co.uk neil@omegascaffoldingolutionsltd.co.uk



**If you're not
SAEMA trained,
are you safe?**

SAEMA has a long history of delivering the very best training and guidance in the suspended access industry.

SAEMA User Training is a unique way for those who have responsibility for, work in or operate, temporary or permanently installed suspended access equipment to be assessed on their technical understanding of the processes and equipment involved.

It is designed for ALL users of suspended access equipment.

At the end of Part 1, you will receive a certificate and a virtual card - stored on your smartphone - which can be checked by Duty Holders when you arrive for the site-based training (Part 2).

SAEMA User Training offers a consistent industry standard for training and worker safety.

www.saema.org/training/



INTERLINK SCAFFOLDING LTD.



Traditional | System | Staircases | Footbridges | Roofs

www.interlinkscaffoldingltd.co.uk

Commercial | Industrial | Historic | Rail | Offshore

**Unit 11, Station Lane Industrial Estate,
Birtley, Tyne & Wear, DH3 1DQ
Tel: 0191 492 2000 | Fax: 0191 410 9972
Email: isl@interlinkscaffoldingltd.co.uk**



X

XL Scaffolding Ltd*
Unit 4, Benwick Road Industrial Estate,
Station Road, Whittlesey, Peterborough PE7 2HD
T: 01733 208686
E: info@xlscaffolding.co.uk
www.xlscaffolding.co.uk

NORTH & NORTH WALES

3D Scaffolding Ltd*
The Oasis Northbank Industrial Park, Irlam,
Manchester M44 5BL
T: 0161 777 9303
E: info@3dscaffolding.co.uk
www.3dscaffolding.co.uk

A

Abbi Access Services Ltd*
Prince William Avenue, Sandycroft,
Deeside CH5 2ZQ
T: 01244 629919
E: admin@abbiaccess.com
www.abbiaccess.com

Access 2 Ltd T/A Sandwell Scaffold
Unit 19, Westbrook Park, Trafford Park Road,
Manchester M17 1AY
T: 0161 873 7922
E: sales@sandwellscaffold.co.uk
www.sandwellscaffold.co.uk

Ace Scaffolding (M/CR) Ltd*
Ace House, Weymouth Road, Eccles,
Greater Manchester M30 8BT
T: 0800 086 2872
E: info@acescaffoldingltd.co.uk
www.acescaffoldingltd.co.uk

Actavo (UK) Ltd*
Unit C, Cedar Court Office Park, Denby Dale Road,
Calder Grove, Wakefield WF4 3QZ
T: 01924 416000
www.actavo.com/industrial

Advance Scaffolding (Lancashire) Ltd*
Unit 1-2 C Blackrod Industrial Estate, off Scot
Lane, Blackrod, Bolton BL6 5SG
T: 01942 830058
E: enquiries@advancescaff.co.uk
www.advancescaff.co.uk

Allied Scaffolding Ltd
Unit 4B, Red Scar Industrial Estate, Longridge
Road, Preston PR2 5NA
T: 0845 296 8854
E: info@alliedaccess.co.uk
www.alliedaccess.co.uk

Allied Scaffolding Ltd
528a Fleet Lane, St Helens, WA9 2NB
T: 0845 296 8854
E: info@alliedaccess.co.uk
www.alliedaccess.co.uk

Allied Scaffolding Ltd*
Littlebank Street, Oldham OL4 1JA
T: 0161 633 0425
E: info@alliedaccess.co.uk
www.alliedaccess.co.uk

Altrad Services UK
The Flarepath, Elsham Wold Industrial Estate,
Elsham, Lincolnshire DN20 OSP
T: 01652 688108
E: uk.communications@altrad.com
<https://uk.altradservices.com>

Altrad Services UK
Bentley Moor Lane, Adwick-le-Street,
Doncaster DN6 7BD
T: 01302 330442
E: uk.communications@altrad.com
<https://uk.altradservices.com>

Altrad Services UK
11, Cowpen Industrial Estate, Billingham,
County Durham TS23 4BX
T: 01642 370077
E: uk.communications@altrad.com
<https://uk.altradservices.com/>

Altrad Services UK
6 & 7 Lyncastle Way, Barleycastle Lane,
Appleton Thorn Trading Estate, Warrington
WA4 4ST
T: 01925 865900
E: uk.communications@altrad.com
<https://uk.altradservices.com/>

Altrad Services UK*
2 Fields End Business Park, Davey Road,
Goldthorpe, South Yorkshire S63 0JF
T: 01709 866050
E: uk.communications@altrad.com
<https://uk.altradservices.com/>

Anglesey Scaffolding (Ynys Mon) Company Ltd*
Site 15, Amlwch Industrial Estate,
Amlwch, Anglesey LL68 9BQ
T: 01407 831331
E: info@angleseyscaffolding.co.uk
www.angleseyscaffolding.co.uk

APE Scaffolding Ltd*
Unit 1, Roeacre Business Park, Bradshaw Street,
Heywood, Greater Manchester OL10 1PN
T: 03452697273
E: sales@apescaffolding.co.uk
www.apescaffolding.co.uk

Apply Scaffolding Services Ltd*
South Grove House, South Grove Drive,
Hoyland, Barnsley S74 9DY
T: 01226 418838
E: applyscaffoldingltd@gmail.com

Arctic Scaffolding Co Ltd*
Unit 1, Bannel Lane, Buckley CH7 3AP
T: 01244 543568
E: admin@arcticscaffolding.com
www.arctic-scaffolding.co.uk

B

B & A Scaffolding Ltd*
Unit D, Therm Road, Cleveland Street,
Hull HU8 7BF
T: 01482 325952
E: enquiries@bandascaffolding.co.uk
www.bandascaffolding.co.uk

Bate Scaffolding Services Ltd*
Unit 6 Ashton Grange Industrial Estate,
Bryn Road, Ashton in Makerfield, Wigan WN4 8BX
T: 01942 726458
www.batescaffolding.co.uk

Bee Jay Scaffolding Ltd*
Airevale House, Ross Mills, Rodley Lane,
Rodley, Leeds LS13 1BQ
T: 0113 239 3240
E: info@beejayscaffolding.ltd.uk
www.beejayscaffolding.ltd.uk

Benchmark Scaffolding Ltd
Max Darby House, Valley Road, Station Road
Industrial Estate, Barnsley S73 0BS
T: 01226 755 922
E: info@benchmarkscuffolding.com
www.benchmarkscuffolding.com

Bilfinger UK Ltd*
Wilson House, Kelburn Court, Birchwood,
Warrington WA3 6UT
T: 0161 537 5555
E: info.b-uk@bilfinger.com
www.is-uk.bilfinger.com

Brand Energy & Infrastructure Services UK Ltd T/A Lyndon SGB
Crabtree Lane, Clayton Industrial Estate,
Station Road, Openshaw. Greater Manchester
M11 1BR
T: 0161 230 4061
E: info@lyndon-sgb.co.uk
www.lyndon-sgb.co.uk

Brand Energy & Infrastructure Services UK Ltd T/A Lyndon SGB
Pontefract Road, Stourton, Leeds LS10 1SP
T: 0113 271 2951
E: info@lyndon-sgb.co.uk
www.lyndon-sgb.co.uk

Brand Energy & Infrastructure Services UK Ltd T/A Lyndon SGB
Hendham Vale Industrial Estate, Hazelbottom
Road, Manchester M8 0AD
T: 0161 205 2100
E: info@lyndon-sgb.co.uk
www.lyndon-sgb.co.uk

Brand Energy & Infrastructure Services UK Ltd T/A Lyndon SGB
Transmission Division, The Business Village @
Barnsley BIC, Building 1 Office 11, Innovation Way,
Wilthorpe, Barnsley S75 1JL
T: 01226 107055
E: info@lyndon-sgb.co.uk
www.lyndon-sgb.co.uk

BSL (Systems) Ltd
5-7 Glegg Street, Liverpool L3 7DX
T: 0151 207 2090
E: info@bslsystems.co.uk
www.bslsystems.co.uk

BSL (Systems) Ltd*
Unit 4 Durlay Park Close, North Cheshire Trading
Estate, Prenton, Wirral CH43 3DZ
T: 0151 207 2090
E: info@bslsystems.co.uk
www.bslsystems.co.uk

Burflex (Scaffolding) Ltd*
Burflex House, Clay Street, Hull HU8 8HA
T: 01482 399340
E: info@burflex.co.uk
www.burflex.co.uk

C

Carlisle Scaffolding Ltd*
Unit 3B, Duchess Avenue, Kingmoor Park North,
Carlisle CA6 4SN
T: 01228 548483
E: info@carlisescaffolding.co.uk
www.carlisescaffolding.co.uk

Castle Scaffold (Northern) Ltd*
Unit 6, Cumberland Road, North Shields
NE29 8RD
T: 01912 591670
E: michael@castlescaffold.co.uk
www.castlescaffold.co.uk

CDM Scaffolding Services (1994) Ltd*
Regulations House, 8a Centre 21, Bridge Lane,
Woolston, Warrington WA1 4AW
T: 019125 812866
E: dtm@cdmscaffolding.co.uk
www.cdmscaffolding.co.uk

Cheshire Scaffolds Ltd
8 Bankfield Court, Ferryview, Commercial Road,
Wirral CH62 3NN
T: 0151 334 3334
E: info@cheshirescaffolds.co.uk
www.cheshirescaffolds.co.uk

Cheshire Scaffolds Ltd*
Haigh Avenue, Whitehill Trading Estate, Reddish,
Stockport SK4 1NU
T: 0161 476 2223
E: info@cheshirescaffolds.co.uk
www.cheshirescaffolds.co.uk

Climax Scaffolding Ltd*
Station Approach, Old Thomas Lane,
Broadgreen, Liverpool L14 3NA
T: 0151 220 0000
E: climaxscuffold@btconnect.com
www.climaxscuffold.com

Commercial Scaffolding Ltd*
Leads Road, Hull HU7 0DF
T: 01482 782181
E: info@commscf.co.uk
www.commscaf.co.uk

Complete Access (Scaffolding) Ltd*
Unit 10, Crigglestone Industrial Estate,
High Street, Crigglestone, Wakefield WF4 3HT
T: 01924 255222
E: info@cascaffolding.co.uk
www.cascaffolding.co.uk

Complete Access Specialist Contracts Ltd*
Unit 14, Oaks Business Park, Oaks Lane,
Barnsley S71 1HT
T: 01226 294455
complete.gb.net

Connolly Scaffolding Ltd*
Unit E1 & E2, Lynn Town Trading Estate,
Eccles, Greater Manchester M30 9QG
T: 0161 886 4910
E: sales@connollyscaffolding.co.uk
www.connollyscaffolding.co.uk

Contract Scaffolding Services Ltd*
Carleton Depot, London Road, Carlisle CA1 3DS
T: 01228 549411
E: info@contractscscaffolding.co.uk
www.contractscscaffolding.co.uk

Crest Scaffolding Ltd*
656 Liverpool Road, Irlam, Greater Manchester
M44 5AD
T: 0161 776 1055
E: info@crestscscaffoldingltd.co.uk
www.crestscscaffoldingltd.com

Crossway Scaffolding (Elland) Ltd*
Pennine View, Dewsbury Road, Elland, Halifax,
West Yorkshire HX5 9JU
T: 01422 370033
E: mail@crosswayscaffolding.co.uk
www.crosswayscaffolding.co.uk

Crown Scaffolding (UK) Ltd*
Unit 10, Redmoor Mill, Buxton Road, New Mills,
Derbyshire SK22 3JT
T: 01663 743407
E: info@crownscaffolding.com
www.crownscaffolding.com

CWR Scaffolds Ltd*
Pomfret Street, Burnley BB11 4AF
T: 01282 412069
E: cwrscscaffolds@btconnect.com
www.cwrscscaffolds.co.uk

D

D. Stewart Scaffolding Ltd*
Unit 4, Aptec Enterprise Park, Darlington Road,
West Auckland DL14 9PD
T: 01388 835881
E: info@dstewartscscaffoldingltd.com
www.dstewartscscaffoldingltd.com

Denholm Industrial Services Ltd
Units 27-29 Normanby Workshops,
Normanby Road, Scunthorpe DN15 8QZ
T: 01724 854456
E: enquiries@denholm-industrial.com
www.denholm-industrial.com

Deva Scaffolding Ltd*
Unit 36 Clwyd Close, Hawarden Industrial Estate,
Manor Lane, Hawarden, Deeside CH5 3PZ
T: 01244 399793
E: admin@devascaffolding.co.uk
www.devascaffolding.co.uk

E

Enigma Industrial Services Ltd
Chain Bridge Road, Blaydon, Newcastle upon
Tyne NE21 5SZ
T: 0191 414 2481
E: info@enigma-is.com
www.enigma-is.com/

Enigma Industrial Services Ltd
Unit 1, Rough-Hey Road, Grimsargh,
Preston PR2 5AR
T: 01772 796665
E: info@enigma-is.com
www.enigma-is.com

Enigma Industrial Services Ltd
Inits 1b & 1c, Cross Lanes Workshops,
Seascale, Cumbria CA20 1FB
T: 01925 294970
E: info@enigma-is.com
www.enigma-is.com

Enigma Industrial Services Ltd*
Hawthorne House, Woodlands Park,
Ashton Road, Newton-le-Willows WA12 0HF
T: 0330 678 1199
E: info@enigma-is.com
www.enigma-is.com

G

Gibby Scaffolding Ltd*
13/15A Brazil Street, Holderness Road,
Hull HU9 1JR
T: 01482 210613

H

H.T. Scaffolding Systems Ltd
379 Bury Road, Prestwich, Manchester
M25 1AW
T: 0161 798 4902
www.htscaffolding.co.uk

H.T. Scaffolding Systems Ltd*
Low Hall Mill, Holbeck Lane, Holbeck,
Leeds LS11 9UP
T: 0113 246 8290
www.htscaffolding.co.uk

High Peak Scaffolding Ltd*
Unit 6, Waterswallows Industrial Estate,
Waterswallows Road, Buxton, Derbyshire
SK17 7JB
T: 01298 767454
www.highpeakscaffolding.co.uk

I

IBN Scaffold Access Ltd
Office 1.16, Hollinwood Business Centre, Albert
Street, Oldham OL8 3QL
T: 0161 428 2898
E: contracts@ibnscaffold.co.uk
www.ibnscaffold.co.uk

IBN Scaffold Access Ltd*
South Yorkshire Ind Estate, Whaley Road,
Barugh Green, Barnsley S75 1HT
T: 01226 206356
E: contracts@ibnscaffold.co.uk
www.ibnscaffold.co.uk

Infniti Scaffolding Ltd*
Unit 16, Olympian Business Park, Cayton Low
Road, Scarborough YO11 3BT
T: 01723 500888
E: info@infnitiscscaffolding.co.uk
www.infnitiscscaffolding.co.uk

Ingleford Scaffolding Ltd*
2 Monument Park, Patinson Industrial Estate,
Washington, Tyne and Wear NE38 8QU
T: 0191 418 6880
E: info@inglefordscaffolding.co.uk
www.inglefordscaffolding.co.uk

Interlink Scaffolding Ltd*
Unit 11, Station Lane Industrial Estate, Birtley,
Tyne and Wear DH3 1DQ
T: 0191 492 2000
E: isl@interlinkscscaffoldingltd.co.uk
www.islscscaffolding.co.uk

J

J Mac Scaffolding Ltd*
Portrack Grange Road, Stockton-on-Tees
TS18 2PH
T: 01642 563 696
E: info@jmacscaffolding.co.uk
www.jmacscaffolding.co.uk

K2 Scaffolds Ltd*
28 Buckton Vale Road, Stalybridge SK15 3LW
T: 0161 338 6626
www.k2scaffolds.co.uk

KAEFER Ltd
Ethan House, Royce Avenue, Cowpen Lane
Industrial Estate, Billingham TS23 4BX
T: 01642 371 850
E: infouk@kaefer.com
www.kaeferltd.co.uk

KAEFER Ltd
West Side, Tyne Dock, South Shields NE34 9PL
T: 0191 489 5279
E: infouk@kaefer.com
www.kaeferltd.co.uk

KAEFER Ltd*
St Omers Road, Western Riverside Route,
Dunston NE11 9EZ
T: 0191 263 4900
E: infouk@kaefer.com
www.kaeferltd.co.uk

Kirk Scaffolding Ltd*
Greenbank Works, Gorse Street, Blackburn
BB13 5U
T: 01254 672337
E: kyle.basterfield@kirkscaffolding.co.uk
www.kirkscaffolding.co.uk

L

Lea Scaffolding & Access Ltd*
Mill Hill Street, Bolton BL2 2AB
T: 01204 800 224
E: info@leascaffolding.co.uk
www.leascaffolding.co.uk

Lenehans Scaffolding (Preston) Ltd*
Unit G8, Redscar Industrial Estate, Longridge
Road, Preston PR2 5NQ
T: 01772 793930
E: lenehans@btconnect.com
www.lenehanscaffolding.co.uk

M

Manor Scaffolding Ltd*
Unit 1 Harpur Hill Business Park, Buxton,
Derbyshire SK17 9JL
T: 01298 27934
E: info@manorscaffolding.co.uk
www.manorscaffolding.co.uk

N

Network Scaffolding Contractors Ltd
Unit 2B, Mode Wheel Road South, Salford,
Greater Manchester M50 1DG
T: 0161 737 4994
E: sales@networkscaffolding.co.uk
www.networkscaffolding.co.uk

Network Scaffolding Contractors Ltd
The Scaffolding Yard, Station Road, Blackrod,
Bolton BL6 5GJ
T: 0161 7374994
E: sales@networkscaffolding.co.uk
www.networkscaffolding.co.uk

Network Scaffolding Contractors Ltd
2 Adam House, Wesley Drive, Benton Square
Industrial, Newcastle upon Tyne NE12 9UP
T: 01642 226626
E: sales@networkscaffolding.co.uk
www.networkscaffolding.co.uk

Network Scaffolding Contractors Ltd*
Levens House, Ackhurst Business Park,
Foxhole Road, Chorley, Lancashire PR7 1NY
T: 0800 954 5078
E: sales@networkscaffolding.co.uk
www.networkscaffolding.co.uk

Northern 90 Scaffolding Ltd*
Palm Business Centre, Stock Lane, Chadderton,
Oldham OL9 9EZ
T: 0161 652 3337
E: info@northern90.com
www.northern90.co.uk



Celebrating 40 years of Raising Standards 1982 – 2022

Scaffolding Specialist to the Conservation Industry



Helping to preserve some of London's most iconic buildings and monuments for over 40 years RPF Scaffolding Ltd are proud and privileged longstanding members of the NASC



T: 01992 524411 E: info@rpfscaffolding.co.uk W: www.rpfscaffolding.co.uk

RPF Scaffolding Ltd,
284 High Road, North Weald,
Essex CM16 6EG

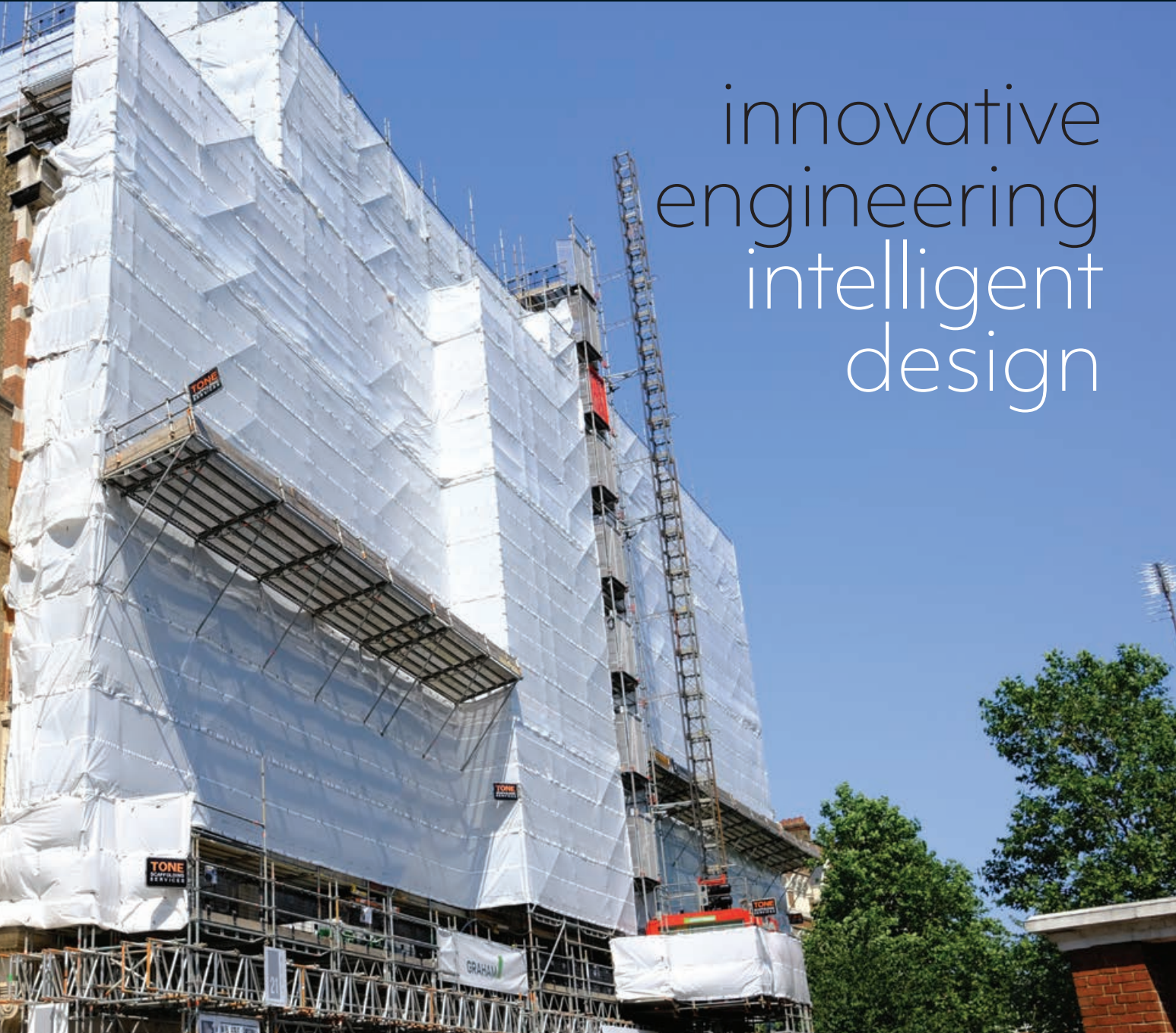


TONE[®]

SCAFFOLDING
SERVICES

ALWAYS **THINKING** ||| ALWAYS **SAFE**

innovative
engineering
intelligent
design



Call now: **020 3781 7771**

TONE Scaffolding Services HQ Green Lane Sawmills, Green Lane, Outwood, Redhill, Surrey RH1 5QP

Email: solutions@tonescaffolding.co.uk www.tonescaffolding.co.uk



*= Head Office

L

Layher Ltd*
Works Road, Letchworth, Hertfordshire SG6 1WL
T: 01462 475100
E: info@layher.co.uk
www.layher.co.uk

P

PERI Ltd
Warley Street, Great Warley, Brentwood,
Essex CM13 3JZ
T: 01277 238820
E: info@peri.ltd.uk
www.peri.ltd.uk

R

Rotamead Ltd*
Essex Works, Hawk Lane, Battlesbridge, Essex
SS11 7RL
T: 01268 764786
E: info@rotamead.co.uk
www.rotamead.co.uk

T

Trad Hire & Sales Ltd
Renwick Road, Barking IG11 0SB
T: 020 8517 1212 / 020 8517 5189
E: hireandsales@trad.co.uk
www.tradhireandsales.co.uk

Trad Hire & Sales Ltd*
Albion Road, Dartford, Kent DA1 5PZ
T: 0161 494 2999
E: hireandsales@trad.co.uk
www.tradhireandsales.co.uk

V

van Thiel United UK Ltd*
Robert Denholm House, Bletchingley Road,
Nutfield, Surrey RH14HW
T: +31 492 469 041
E: sales@thieluk.com
www.thiel.nl

MIDLANDS

A

Actavo Hire and Sales UK Ltd
319 Shady Lane, Great Barr, Birmingham
B44 9EA
T: 0121 366 7840
www.actavo.com

Actavo Hire and Sales UK Ltd
Island Carr Industrial Estate, Island Carr Road,
Brigg, Lincolnshire DN20 8PD
T: 0165 260 1390
www.actavo.com

Actavo Hire and Sales UK Ltd
Manor House Road, Long Eaton,
Nottingham NG10 1LR
T: 0115 946 7660
www.actavo.com

Actavo Hire and Sales UK Ltd
Unit 5, Fengate Trade Park, Second Drove,
Peterborough PE1 5XA
T: 01733 890009
www.actavo.com

ATPAC Ltd
Middlemore Road, Birmingham B66 2DZ
T: 0121 726 8446
E: info@at-pac.com
www.at-pac.com

F

Forgeco Ltd*
Swarn House, Meadow Lane, Coseley,
Wolverhampton WV14 9NQ
T: 0121 568 7831
E: sales@forgeco.co.uk
www.forgeco.co.uk

G

Generation (UK) Ltd T/A Generation Hire & Sale
Kingsfield Way, Northampton NN5 7QN
T: 0160 458 0444
E: sales@generationuk.co.uk
www.generationscaffolding.com/en-gb/
Generation (UK) Ltd T/A Generation Hire & Sale
Trinity Street, off Tat Bank Road, Oldbury,
Birmingham B69 4LA
T: 0121 544 3355
E: sales@generationuk.co.uk
www.generationscaffolding.com/en-gb/
Generation (UK) Ltd T/A Generation Hire & Sale
87-93 Amington Road, Birmingham B25 8ET
T: 0121 706 0000
E: sales@generationuk.co.uk
www.generationscaffolding.com/en-gb/
Generation (UK) Ltd T/A Generation Hire & Sale*
Trinity Street, off Tat Bank Road, Oldbury
B69 4LA
T: 0800 7797112
E: sales@generationuk.co.uk
www.generationscaffolding.com/en-gb/

H

HAKI Ltd*
G1, Pacific House, Relay Point, Tamworth,
Staffordshire B77 5PA
T: 01827 282525
E: info@haki.co.uk
www.haki.com

L

Layher Ltd
Harvills Hawthorne, Westgate, West Bromwich
B70 0UD
T: 0121 274 0558
E: info@layher.co.uk
www.layher.co.uk

P

PcP Gratings Ltd*
Enterprise Drive, Four Ashes, Wolverhampton
WV10 7DF
T: 01902 791792
E: sales@pcpgratings.co.uk
www.pcpgratings.co.uk

PERI Ltd
Unit 2625, Kings Court, The Crescent,
Birmingham Business Park, Birmingham B37 7YE
T: 0121 295 1345
E: info@peri.ltd.uk
www.peri.ltd.uk

PERI Ltd*
Market Harborough Road, Clifton upon
Dunsmore, Rugby CV23 0AN
T: 01788 861600
E: info@peri.ltd.uk
www.peri.ltd.uk

R

Ramsteel Tubes Ltd*
Unit C, Barton Turns, Barton-under-Needwood,
Burton-on-Trent, Staffordshire DE13 8EB
T: 01283 713840
E: paul@ramsteel.co.uk
www.ramsteel.co.uk

T

Trad Hire & Sales Ltd
Trad House, Brickhouse Lane, West Bromwich
B70 0DY
T: 0121 522 2333
E: hireandsales@trad.co.uk
www.tradhireandsales.co.uk

Trademagic Ltd*
North Works, Westgate, Aldridge, Walsall
WS9 8UF
T: 01922 611292
www.trademagic.co.uk

NORTH & NORTH WALES

A

Actavo Hire and Sales UK Ltd
Nest Road, Felling Industrial Estate, Gateshead
NE10 0LU
T: 0191 490 6866
www.actavo.com

Actavo Hire and Sales UK Ltd
Tennax Road, Trafford Park, Manchester M17 1JT
T: 0161 969 3925
www.actavo.com

Actavo Hire and Sales UK Ltd
Unit 7, Hawthorne Court, Howley Park Road,
Morley, Leeds LS27 0BN
T: 0113 387 0630
www.actavo.com

Actavo Hire and Sales UK Ltd
Unit 14, Meadow Bank Works, Meadow Bank Road,
Rotherham S61 2NF
T: 01709 554149
www.actavo.com

Actavo Hire and Sales UK Ltd
Unit C, Cedar Court Office Park, Denby Dale
Road, Calder Grove, Wakefield WF4 3QZ
www.actavo.com

Alustar UK*
Stokoe Rodger, 15 Bankside, The Watermark,
Gateshead NE11 9SY
T: 0191 461 9300
E: alustar@alustar.no
www.alustar.no

C

CCB Scaffolding Supplies Ltd
Herons Way, Chester CH4 9QR
T: 07748 569 255
E: info@ccbsales.com
www.ccbcaffolding.com

E

Enigma Industrial Services Ltd*
Hawthorne House, Woodlands Park, Ashton
Road, Newton-le-Willows WA12 0HF
T: 0330 678 1199
E: info@enigma-is.com
www.enigma-is.com

G

Generation (UK) Ltd T/A Generation Hire & Sale
Unit 2, Ledger Park, Haigh Park Road,
Stourton, Leeds LS10 1RT
T: 0113 277 8822
E: sales@generationuk.co.uk
www.generationscaffolding.com/en-gb/
Generation (UK) Ltd T/A Generation Hire & Sale
Forward House, Portobello Road,
Portobello Industrial Estate, Birtley DH3 2SN
T: 0191 492 1190
E: sales@generationuk.co.uk
www.generationscaffolding.com/en-gb/

DESIGN MEMBERS

81

48.3 Scaffold Design Ltd

Kingsgate, 62 High Street, Redhill, Surrey
RH11SH
T: 01737 244047
E: info@483.co.uk
www.483.co.uk

A

Access Design & Safety Ltd

1 Parsons Street, Dudley, West Midlands DY11JJ
T: 01384 459090
E: info@designsafe.co.uk
www.designsafe.co.uk

B

Buckley Design Solutions Ltd

Suite 17, Lowry Mill, Lees Street, Swinton,
Manchester M27 6DB
T: 0800 270 7998
E: info@buckleydesigns.co.uk
www.buckleydesigns.co.uk

D

Double Scaffold Design Ltd

801 London Road, Westcliff-on-Sea, Essex
SS0 9SY
T: 01702 826210
E: jack.wyatt@doublesd.co.uk
www.doublescaffolddesign.co.uk

E

Engineering Techniques Ltd

102 Rookery Court, Leyton, London E10 5UB
T: 020 8534 1009
E: finance@engineeringtech.co.uk
www.engineeringtech.co.uk

G

Gallery Access Solutions Ltd

1084 Tollcross Road (Unit 2), Tollcross, Glasgow
G32 8UN
T: 0141 258 6610
E: info@galleryaccesssolutions.co.uk
www.galleryaccesssolutions.co.uk

GW Coote Limited

Unit 4 30 Breakfield, Coulsdon CR5 2HS
T: 020 8660 0080
www.gwcoote.co.uk

H

Highland Temporary Works Ltd

22B Longman Drive, Inverness IV11SU
T: 01463 237 945
www.htwdesign.co.uk

I

Independent Design House Ltd

Studio 2, Westree House, 2 Westree Road,
Maidstone, Kent ME16 8HB
T: 01622 690410
E: info@idh-design.co.uk
www.idh-design.co.uk

J

JM Scaffold Design Ltd

Crescent House, 2-6 Sandy Lane, Leyland,
Lancashire PR25 2EB
T: 07803 723070
E: james.morgan@jmscaffolddesign.co.uk
www.jmscaffolddesign.co.uk

O

Optima Scaffold Designs LLP

26a Osprey Court, Hawkfield Business Park,
Whitchurch, Bristol, BS14 0BB
T: 01275 393944
E: bristol@optima-designs.co.uk
www.optima-designs.co.uk

P

PB Scaffold Design Ltd

Century Offices, 2175 Century Way, Thorpe Park,
Leeds LS15 8ZB
T: 01133 900150
E: phil@pbscaffolddesign.co.uk
www.pbscaffolddesign.co.uk

R

Raptor Scaffold Design & Consultancy Ltd

Bosavern Cottage, St Just, Penzance, Cornwall
TR19 7RD
T: 01736 788703
E: enquiries@raptorscaffolddesigns.co.uk
www.raptorscaffolddesigns.co.uk

RDG Engineering (Temporary Works) Ltd

1st Floor, Derbyshire House, St Chads Street,
London WC1H 8AG
T: 020 7036 1650
E: info@rdgengineering.co.uk
www.rdgengineering.co.uk

Rise Scaffold Services Ltd

Acer Road, Saddlebow Industrial Estate,
King's Lynn, Norfolk PE34 3HN
T: 01553 692021
E: info@rise-scaffold.co.uk
www.rise-scaffold.co.uk

S

Scaffold Structure Designs UK Ltd

Wheatleys Eyot, Sunbury-on-Thames
TW16 6DA
T: 07956 638199
E: twarrensd@gmail.com

T

Technical & Design Engineering Ltd T/A TAD

9 Bradenham Place, Cardiff CF64 2AG
T: 02921 660126
E: info@tad-designs.co.uk
www.tad-designs.co.uk

Tubular Techniques Ltd

Unit 2 & 3, The Paddocks, Wood Street,
Swanley, Kent BR8 7PA
T: 01322 615218
E: keith@tubulartechniquesltd.co.uk
www.tubulartechniquesltd.co.uk

INFORMATION MEMBERS

A

Access Training Services

12 Park Avenue, Redcar, North Yorkshire TS10 3JZ
T: 01642 474535
E: accesstraining@btopenworld.com
www.accesstraining.co.uk

All Access Training Services Ltd

76 Queen Elizabeth Avenue, Hillington, Glasgow
G52 4NQ
T: 0141 882 2555
E: admin@allaccesstraining.co.uk
www.allaccesstraining.co.uk

All Aspects Scaffolding Ltd T/A All Aspects Scaffolding Safety Services

Lime Kilns Farm, Brentwood Road, Orsett, Grays,
Essex RM16 3HU
T: 01375 893590
E: info@allaspectsscaffoldsafety.co.uk
www.allaspectsscaffolding.co.uk

B

BAM Construct UK Ltd

Breakspear Park, Breakspear Way, Hemel
Hempstead, Hertfordshire HP2 4FL
T: 01442 238300
www.bam.co.uk

Brady Corporation Ltd T/A Scaffag

Units 22-28, Hayes Lane, Sully, Vale of
Glamorgan CF64 5AB
T: 01295 228288
www.brady.co.uk

C

CADS (Computer And Design Services Ltd)

Arrowsmith Court, 10 Station Approach,
Broadstone, Dorset BH18 8AX
T: 01202 603031
E: sales@smartscaffolder.com
www.smartscaffolder.com

Citation Ltd

Kings Court, Water Lane, Wilmslow, Cheshire
SK9 5AR
T: 0345 234 0404
www.citation.co.uk

CITB

Bircham Newton, King's Lynn, Norfolk PE31 6RH
T: 0344 994 4400
www.citb.co.uk

Clarke Health and Safety Consultants Ltd

9 Paignton Road, Liverpool L16 4PN
T: 0151 722 8268
E: markclarke207@btinternet.com
www.clarkehealthandsafety.com

Clear Insurance Management Ltd T/A CLEAR MPW

7/8 Tolherst Court, Turkey Mill, Ashford Road,
Maidstone, Kent ME14 5SF
T: 01622 683913
E: info@mpwbroskers.com
www.mpwbroskers.com

Costain Ltd

Costain House, Vanwall Business Park,
Maidenhead, Berkshire SL6 4UB
T: 01628 842444
E: thomas.pawson@costain.com
www.costain.com

I

IPhorms Ltd

Waterside House, Waterside, Macclesfield,
Cheshire SK11 7HG
T: 01625 464 238
E: nigel@iphorms.com
www.iphorms.com

J

J Mac Safety Systems Ltd

Landscape House, Blue House Point Road,
Stockton-on-Tees TS18 2PJ
T: 01642 563 696
E: luis.mccarthy@jmacsafetysystems.co.uk
www.jmacsafetysystems.co.uk

K

Kier Professional Services Ltd

2nd Floor, Optimum House, Clippers Quay
Salford, Greater Manchester M50 3XP
T: 01767 355000
www.kier.co.uk

M

McCarron Coates Ltd

17 Howley Park Business Village, Pullan Way,
Morley, Leeds, West Yorkshire LS27 0BZ
T: 0113 298 3489
E: luiji@mccarroncoates.co.uk
www.mccarroncoates.com

R

Rhino Deck Ltd

Jubilee House, No. 3 Gelders Hall Road,
Shepsted, Loughborough, Leicestershire LE12
9NH
T: 01509 502155
E: lee.muggleton@sayfasystems.com
www.sayfasystems.co.uk/rhinodeck

S

Safety & Access Ltd

Dabell Avenue, Blenheim Industrial Estate,
Bulwell, Nottingham NG6 8WA
T: 0115 979 4523
E: safe@safetyaccess.co.uk
www.safetyaccess.co.uk

Scaftec Ltd

Panorama Business Village, 8 Lonmay Place,
8 Lonmay Place, Queenslie, Glasgow G33 4ER
T: 0141 771 4400
E: info@scaftec.co.uk
www.scaftec.co.uk

Simian Risk Management Ltd

Wallis House, The Quadrant, Birchwood Park,
Warrington WA3 6FW
T: 0345 602 2418
www.simian-risk.com

SpanSet Ltd

Telford Way, Middlewich, Cheshire CW10 0HX
T: 01606 737494
E: customerservices@spanset.co.uk
www.spanset.co.uk

StrikeSoft Ltd

1A Standon Business Park, Stortford Road,
Standon, Ware, Hertfordshire SG11 1PH
T: 0845 3457108
www.strikesoft.co.uk

T

Training 2000 Ltd

Furthergate Industrial Park, Harwood Street,
Blackburn, Lancashire BB1 3BD
T: 01254 54659
www.training2000.co.uk

Tufcoat Ltd

3 Garden Close, Langage Business Park,
Plymouth PL7 5EU
T: 01752 227333
www.tufcoat.co.uk

V

Vinci Construction UK Ltd

Astral House, Imperial Way, Watford WD24 4WW
T: 01923 233433
www.vinciconstruction.co.uk

W

Wates Construction Ltd

Wates House, Station Approach, Leatherhead,
Surrey KT22 7SW
T: 01372 861000
www.wates.co.uk

Wildgoose Construction Ltd

Horsefair House, 35 King Street, Alfreton,
Derbyshire DE55 7BY
T: 01773 546400
www.wildgooseconstruction.co.uk

Willmott Dixon Holdings Ltd

Suite 201, The Spirella Building, Bridge Road,
Letchworth Garden City, Hertfordshire SG6 4GY
T: 01462 671852
www.willmott-dixon.co.uk

Winters Safety Services Ltd

20 Ashlar Avenue, Cumbernauld, North
Lanarkshire G68 0GL
T: 01236 728290
www.winterssafetyservices.co.uk

Z

Zep UK Ltd

PO Box 12, Tanhouse Lane, Widnes, Cheshire
WA8 0RD
T: 0151 422 1000
E: salesupport@zepeurope.com
zepcommercial.co.uk

INTERNATIONAL
INFORMATION
MEMBERS

A

Ashghal (Public Works Authority)

Ashghal Tower 3, 19 Floor, Quality and Safety
Department, PO Box 22188, Doha, Qatar
T: 44950206
E: customerservice@ashghal.gov.qa
www.ashghal.gov.qa

B

**Black Cat Insulation Technical Stock Joint
Stock Company**

Road No. 6, Dong Xuyen Industrial Zone, Rach
Dua Ward, Vung Tau City, Vietnam
T: +84 254 3577 451
E: info@blackcatjsc.com.vn
www.blackcatjsc.com.vn

F

Falck Prime Atlantic Ltd

9 Younis Bashorun Street, Victoria Island, Lagos,
Nigeria
T: +234 [1] 460 6130
E: ac@falckprimeatlantic.com
www.falckprimeatlantic.com

N

National Construction Training Centre (LOETB)

Mount Lucas Daingean, Offaly
T: +353 5793 62564
E: jkelly@mountlucas.ie
www.mountlucas.ie

National Training Institute LLC

PO Box 267, Postal Code 115, Madinet Al Sultan
Qaboos, Muscat, Sultanate of Oman
T: 00968 24228600
E: info@ntioman.com
www.ntioman.com

P

PERI APAC Services Sdn.Bhd.

B-12-02, Level 10, Block B, East Wing, PJ8, No 23
Jalan Barat, Seksyen 8, Selangor Darul Ehsan,
Malaysia
T: +60 [03] 7969 1088
E: training@perimalaysia.com
www.perimalaysia.com

Q

Qatar International Safety Centre (QISC)

Gate number 9, Street 45, Salwa Industrial Area,
Doha, Qatar
T: +974 4450 1223
E: training@madinagulf.com
www.qisc.net

S

Scaffolding Manufacturers Trinidad Ltd

53 Pacific Avenue, Pt. Lisas Industrial Estate,
Pt. Lisas, Trinidad
T: 1 (888) 636 2457
E: info@scaffmantt.com
www.scaffmantt.com

Simian Skill FZ - LLC

Unit 64, Al Kawakeb Estate, 13th Street off 12th
Street, Al Quoz Industrial Estate Area 2, Dubai
T: 07702 829 602
E: pkaur@simian-skill.com
www.simian-risk.com

T

TAFE Arabia Technical and Further Education

3rd Floor, Samic Tower, Al Khaleej Road,
Dammam, Kingdom of Saudi Arabia
T: +966 13 8099353
E: info@tafear.com
www.tafear.com

W

Wenma Forming and Shoring Co., Ltd

E2-16 Binhai International Business Park,
No 199 Haiyuan Road, Tanggu Distric, Tianjin,
China
T: 0086 138 2089 7176
E: tjdwg2018@dwgmj.com
www.dwgmj.com



GILRAY PLANT

Flying the Flag for Quality

We are proud to produce
a truly British product
machine-stress-graded,
top quality boards



BSI Kitemarked Scaffold
Boards made to BS 2482

01322 442006

gilray.co.uk





carbon neutral

GKR is contributing to the construction industry achieving its Net Zero Carbon target.



Reducing Carbon Emissions

Reducing fleet emissions by 90% using HVO fuel



Offsetting Remaining Emissions

Plant a tree - Save a tree programme in the UK and Amazon Rainforest



Net Zero Target for 2023

Roadmap to achieve Net Zero by December 2023

Helping you build a better future

gkrscaffolding.co.uk

020 7928 9575